



Order: (888)-282-5810 (Phone)
(818)-707-0392 (Fax)
order@abiocode.com
Web: www.Abiocode.com

RALGPS1 (N) Antibody, Rabbit Polyclonal

Cat#: R1853-1

Quantity: 100 ul

Predicted | Observed M.W.: 62 kDa

Lot#: Refer to vial

Application: WB

Uniprot ID: Q5JS13

Background:

RALGPS1 is guanine nucleotide exchange factor (GEF) for the small GTPase RALA. RALGPS1 is widely expressed and may be involved in cytoskeletal organization.

Other Names:

Ras-specific guanine nucleotide-releasing factor RalGPS1, Ral GEF with PH domain and SH3-binding motif 1, Ral guanine nucleotide exchange factor 2, RalGEF 2 RalA, exchange factor RalGPS1, KIAA0351, RALGEF2

Source and Purity:

Rabbit polyclonal antibodies were produced by immunizing animals with a GST-fusion protein containing N-terminal region of human RALGPS1. Antibodies were purified by affinity purification using immunogen.

Storage Buffer and Condition:

Supplied in 1 x PBS (pH 7.4), 100 ug/ml BSA, 40% Glycerol, 0.01% NaN₃. Store at -20 °C. Stable for 6 months from date of receipt.

Species Specificity:

Human, Mouse

Tested Applications:

WB: 1:1,000-1:3,000 (detect endogenous protein*)

*: The apparent protein size on WB may be different from the calculated M.W. due to modifications.

Product Data:

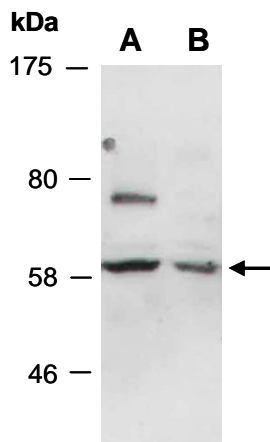


Fig 1. Western blot of total cell extracts from A) mouse thymus, B) human HeLa; using anti-RALGPS1 (N) (R1853-1) at RT for 2 h.