



Order: (888)-282-5810 (Phone)  
(818)-707-0392 (Fax)  
[order@abiocode.com](mailto:order@abiocode.com)  
Web: [www.Abiocode.com](http://www.Abiocode.com)

---

## **DLX4 (N2) Antibody, Rabbit Polyclonal**

**Cat#: R1900-3**

**Quantity: 100 ul**

**Predicted | Observed M.W.: 26 | 30 kDa**

**Lot#: Refer to vial**

**Application: WB**

**Uniprot ID: P70436**

### **Background:**

Many vertebrate homeo box-containing genes have been identified on the basis of their sequence similarity with Drosophila developmental genes. Members of the Dlx gene family contain a homeobox that is related to that of Distal-less (Dll), a gene expressed in the head and limbs of the developing fruit fly. The Distal-less (Dlx) family of genes comprises at least 6 different members, DLX1-DLX6. The DLX proteins are postulated to play a role in forebrain and craniofacial development. Three transcript variants have been described for the DLX4 gene, however, the full length nature has not been described. Studies of the two splice variants revealed that one encoded isoform functions as a repressor of the beta-globin gene while the other isoform lacks that function [provided by RefSeq].

### **Other Names:**

Homeobox protein DLX-4, Beta protein 1, Homeobox protein DLX-7, Homeobox protein DLX-8, BP1, DLX7, DLX8, DLX9

### **Source and Purity:**

Rabbit polyclonal antibodies were produced by immunizing animals with a GST-fusion protein containing the N-terminal region of mouse DLX4. Antibodies were purified by affinity purification using immunogen.

### **Storage Buffer and Condition:**

Supplied in 1 x PBS (pH 7.4), 100 ug/ml BSA, 40% Glycerol, 0.01% NaN<sub>3</sub>. Store at -20 °C. Stable for 6 months from date of receipt.

### **Species Specificity:**

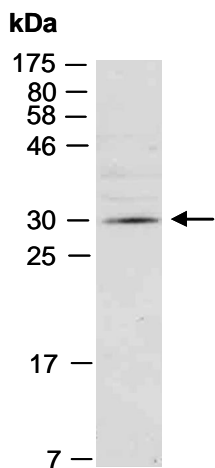
Mouse

### **Tested Applications:**

WB: 1:1,000-1:3,000 (detect endogenous protein\*)

\*: The apparent protein size on WB may be different from the calculated M.W. due to modifications.

**Product Data:**



**Fig 1.** Western blot of total cell extracts from mouse brain; using anti-DLX4 (N2) (R1900-3) at RT for 2 h.