



Order: (888)-282-5810 (Phone)
(818)-707-0392 (Fax)
order@abiocode.com
Web: www.Abiocode.com

ELL (vPair™) Antibodies

Cat#: R2708-vp

Lot#: Refer to vial

Predicted I Observed M.W.: 68 I 80 kDa

Uniprot ID: P55199

Application: WB

Quantity: 50 ul ELL (N) (R2708-1) Rabbit Polyclonal Antibody &
50 ul ELL (C) (R2708-2) Rabbit Polyclonal Antibody

Product Introduction:

vPair™ antibodies represent a pair of fully characterized antibodies that recognize two different regions of a target protein. The product is developed by Abiocode to address whether the signal observed truly represents the protein of interest, an often encountered issue in antibody-based assays. The use of a pair of fully characterized vPair™ antibodies in the same assay can validate signal specificity since vPair™ antibodies recognize two independent epitopes of the same protein. Different sets of vPair™ antibodies are developed at Abiocode to work with specific applications, including antibody arrays, Western blot, IP-Western, ChIP, IHC, and FACS.

Background:

Eleven-nineteen lysine-rich leukemia protein (ELL) is an elongation factor component of the super elongation complex (SEC), a complex required to increase the catalytic rate of RNA polymerase II transcription by suppressing transient pausing by the polymerase at multiple sites along the DNA. ELL also plays an early role before its assembly into the SEC complex by stabilizing RNA polymerase II recruitment/initiation and entry into the pause site. ELL is required to stabilize the pre-initiation complex and early elongation.

Other Names:

RNA polymerase II elongation factor ELL, Eleven-nineteen lysine-rich leukemia protein, C19orf17, ELL1, Men, PPP1R68

Source and Purity:

Rabbit polyclonal antibodies were produced by immunizing animals with GST-fusion proteins containing either the N-terminal [ELL (N) (R2708-1)] or the C-terminal [ELL (C) (R2708-2)] region of human ELL. Antibodies were purified by affinity purification using immunogen.

Storage Buffer and Condition:

Supplied in 1 x PBS (pH 7.4), 100 ug/ml BSA, 40% Glycerol, 0.01% NaN₃. Store at -20 °C. Stable for 6 months from date of receipt.

For research use only. Not for therapeutic or diagnostic purposes.
Abiocode, Inc., 29397 Agoura Rd., Ste 106, Agoura Hills, CA 91301

Species Specificity:

Human, Mouse

Tested Applications:

WB: 1:1,000-1:3,000 (detect endogenous protein*)

*: The apparent protein size on WB may be different from the calculated M.W. due to modifications.

Product Data:

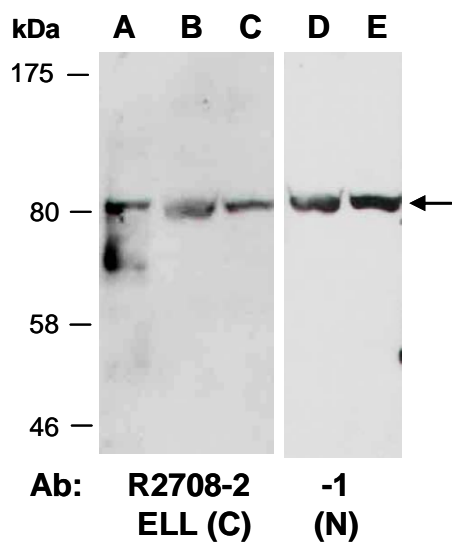


Fig 1. Western blot of total cell extracts from A) mouse thymus, B, D) human HeLa, C, E) human Jurkat; using 2 independent Abs against 2 distinct regions of human ELL at RT for 2 h.