



Order: (888)-282-5810 (Phone)
(818)-707-0392 (Fax)
order@abiocode.com
Web: www.Abiocode.com

RECQL (C) Antibody, Rabbit Polyclonal

Cat#: R2057-2

Quantity: 100 ul

Predicted | Observed M.W.: 73 | 80 kDa

Lot#: Refer to vial

Application: WB

Uniprot ID: P46063

Background:

RECQL may play a role in the repair of DNA that is damaged by ultraviolet light or other mutagens. RECQL exhibits a magnesium-dependent ATP-dependent DNA-helicase activity that unwinds single- and double-stranded DNA in a 3'-5' direction.

Other Names:

ATP-dependent DNA helicase Q1, DNA helicase, RecQ-like type 1, RecQ1 DNA-dependent ATPase Q1, RecQ protein-like 1, RECQ1, RECQL1

Source and Purity:

Rabbit polyclonal antibodies were produced by immunizing animals with a GST-fusion protein containing C-terminal region of human RECQL. Antibodies were purified by affinity purification using immunogen.

Storage Buffer and Condition:

Supplied in 1 x PBS (pH 7.4), 100 ug/ml BSA, 40% Glycerol, 0.01% NaN₃. Store at -20 °C. Stable for 6 months from date of receipt.

Species Specificity:

Human, Mouse

Tested Applications:

WB: 1:1,000-1:3,000 (detect endogenous protein*)

*: The apparent protein size on WB may be different from the calculated M.W. due to modifications.

Product Data:

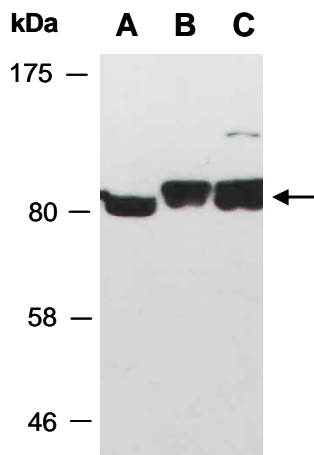


Fig 1. Western blot of total cell extracts from A) mouse thymus, B) human HeLa, C) human Jurkat; using anti-RECQL (C) (R2057-2) at RT for 2 h.