



Order: (888)-282-5810 (Phone)
(818)-707-0392 (Fax)
order@abiocode.com
Web: www.Abiocode.com

PRF1 (N) Antibody, Rabbit Polyclonal

Cat#: R2618-1

Quantity: 100 ul

Predicted | Observed M.W.: 61 kDa

Lot#: Refer to vial

Application: WB

Uniprot ID: P14222

Background:

PRF1 plays a key role in secretory granule-dependent cell death, and in defense against virus-infected or neoplastic cells. PRF1 plays an important role in killing other cells that are recognized as non-self by the immune system, e.g. in transplant rejection or some forms of autoimmune disease. PRF1 can insert into the membrane of target cells in its calcium-bound form, oligomerize and form large pores. PRF1 promotes cytolysis and apoptosis of target cells by facilitating the uptake of cytotoxic granzymes.

Other Names:

Perforin-1, P1, Cytolysin Lymphocyte pore-forming protein, PFP

Source and Purity:

Rabbit polyclonal antibodies were produced by immunizing animals with a GST-fusion protein containing N-terminal region of human PRF1. Antibodies were purified by affinity purification using immunogen.

Storage Buffer and Condition:

Supplied in 1 x PBS (pH 7.4), 100 ug/ml BSA, 40% Glycerol, 0.01% NaN₃. Store at -20 °C. Stable for 6 months from date of receipt.

Species Specificity:

Human, Mouse

Tested Applications:

WB: 1:1,000-1:3,000 (detect endogenous protein*)

*: The apparent protein size on WB may be different from the calculated M.W. due to modifications.

Product Data:

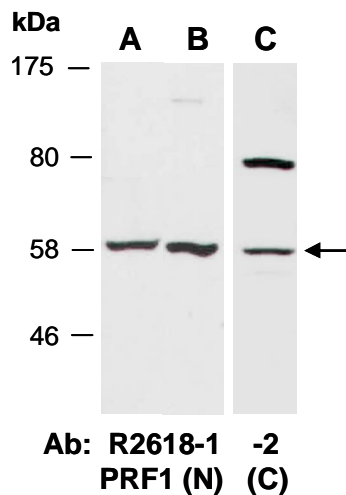


Fig 1. Western blot of total cell extracts from A) mouse thymus, B, C) human Jurkat; using 2 independent Abs against 2 distinct regions of human PRF1 at RT for 2 h.