



Order: (888)-282-5810 (Phone)  
(818)-707-0392 (Fax)  
[order@abiocode.com](mailto:order@abiocode.com)  
Web: [www.Abiocode.com](http://www.Abiocode.com)

---

## **PRF1 (C) Antibody, Rabbit Polyclonal**

**Cat#: R2618-2**

**Quantity: 100 ul**

**Predicted I Observed M.W.: 61 kDa**

**Lot#: Refer to vial**

**Application: WB**

**Uniprot ID: P14222**

### **Background:**

PRF1 plays a key role in secretory granule-dependent cell death, and in defense against virus-infected or neoplastic cells. PRF1 plays an important role in killing other cells that are recognized as non-self by the immune system, e.g. in transplant rejection or some forms of autoimmune disease. PRF1 can insert into the membrane of target cells in its calcium-bound form, oligomerize and form large pores. PRF1 promotes cytolysis and apoptosis of target cells by facilitating the uptake of cytotoxic granzymes.

### **Other Names:**

Perforin-1, P1, Cytolysin Lymphocyte pore-forming protein, PFP

### **Source and Purity:**

Rabbit polyclonal antibodies were produced by immunizing animals with a GST-fusion protein containing C-terminal region of human PRF1. Antibodies were purified by affinity purification using immunogen.

### **Storage Buffer and Condition:**

Supplied in 1 x PBS (pH 7.4), 100 ug/ml BSA, 40% Glycerol, 0.01% NaN<sub>3</sub>. Store at -20 °C. Stable for 6 months from date of receipt.

### **Species Specificity:**

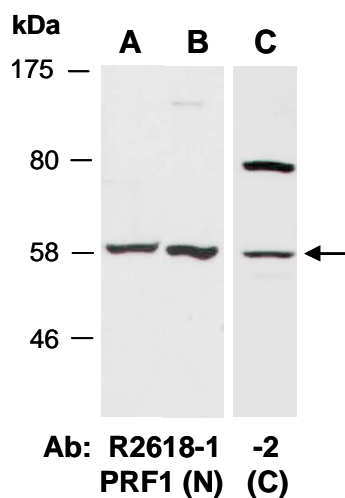
Human

### **Tested Applications:**

WB: 1:1,000-1:3,000 (detect endogenous protein\*)

\*: The apparent protein size on WB may be different from the calculated M.W. due to modifications.

**Product Data:**



**Fig 1.** Western blot of total cell extracts from A) mouse thymus, B, C) human Jurkat; using 2 independent Abs against 2 distinct regions of human PRF1 at RT for 2 h.