



Order: (888)-282-5810 (Phone)
(818)-707-0392 (Fax)
order@abiocode.com
Web: www.Abiocode.com

MPL (C) Antibody, Rabbit Polyclonal

Cat#: R2803-2

Quantity: 100 ul

Predicted | Observed M.W.: 71 | 75-85 kDa

Lot#: Refer to vial

Application: WB

Uniprot ID: P40238

Background:

Myeloproliferative leukemia protein (MPL) is a single-pass transmembrane protein also known as Thrombopoietin receptor (TPOR). MPL is a receptor for thrombopoietin, which belongs to the type I cytokine receptor family. MPL may represent a regulatory molecule specific for TPO-R-dependent immune responses. MPL deficient mice were severely thrombocytopenic, emphasizing the important role of MPL and thrombopoietin in megakaryocyte and platelet formation.

Other Names:

Thrombopoietin receptor, TPO-R, Myeloproliferative leukemia protein, Proto-oncogene c-Mpl, CD110, TPOR

Source and Purity:

Rabbit polyclonal antibodies were produced by immunizing animals with a GST-fusion protein containing C-terminal region of human MPL. Antibodies were purified by affinity purification using immunogen.

Storage Buffer and Condition:

Supplied in 1 x PBS (pH 7.4), 100 ug/ml BSA, 40% Glycerol, 0.01% NaN₃. Store at -20 °C. Stable for 6 months from date of receipt.

Species Specificity:

Human, Mouse

Tested Applications:

WB: 1:1,000-1:3,000 (detect endogenous protein*)

*: The apparent protein size on WB may be different from the calculated M.W. due to modifications.

Product Data:

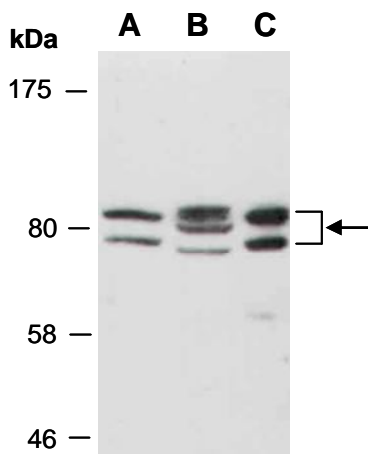


Fig 1. Western blot of total cell extracts from A) mouse thymus, B) human HeLa, C) human Jurkat; using anti-MPL (C) (R2803-2) at RT for 2 h.