



Order: (888)-282-5810 (Phone)
(818)-707-0392 (Fax)
order@abiocode.com
Web: www.Abiocode.com

MEN1 (C) Antibody, Rabbit Polyclonal

Cat#: R2979-2

Quantity: 100 ul

Predicted | Observed M.W.: 68 kDa

Lot#: Refer to vial

Application: WB

Uniprot ID: O00255

Background:

Multiple endocrine neoplasia I (MEN1) is also known as Menin, a putative tumor suppressor associated with a syndrome known as multiple endocrine neoplasia type 1. *In vitro* studies have shown that MEN1 is localized to the nucleus, possesses two functional nuclear localization signals, and inhibits transcriptional activation by JunD; however, the function of this protein is not known [provided by RefSeq].

Other Names:

Menin, SCG2, multiple endocrine neoplasia I

Source and Purity:

Rabbit polyclonal antibodies were produced by immunizing animals with a GST-fusion protein containing the C-terminal region of human MEN1. Antibodies were purified by affinity purification using immunogen.

Storage Buffer and Condition:

Supplied in 1 x PBS (pH 7.4), 100 ug/ml BSA, 40% Glycerol, 0.01% NaN₃. Store at -20 °C. Stable for 6 months from date of receipt.

Species Specificity:

Human

Tested Applications:

WB: 1:1,000-1:3,000 (detect endogenous protein*)

*: The apparent protein size on WB may be different from the calculated M.W. due to modifications.

Product Data:

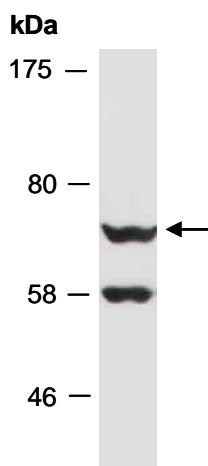


Fig 1. Western blot of total cell extracts from human HeLa, using anti-MEN1 (C) (R2979-2) at RT for 2 h.