



Order: (888)-282-5810 (Phone)
(818)-707-0392 (Fax)
order@abiocode.com
Web: www.Abiocode.com

DLG2 (M) Antibody, Rabbit Polyclonal

Cat#: R2888-2

Quantity: 100 ul

Predicted | Observed M.W.: 98 kDa

Lot#: Refer to vial

Application: WB

Uniprot ID: Q15700

Background:

DLG2 is required for perception of chronic pain through NMDA receptor signaling. DLG2 regulates surface expression of NMDA receptors in dorsal horn neurons of the spinal cord. DLG2 interacts with the cytoplasmic tail of NMDA receptor subunits as well as inward rectifying potassium channels. DLG2 is involved in regulation of synaptic stability at cholinergic synapses. DLG2 is part of the postsynaptic protein scaffold of excitatory synapses.

Other Names:

Disks large homolog 2, Channel-associated protein of synapse-110, Chapsyn-110, Postsynaptic density protein PSD-93, PPP1R58, PSD-93, PSD93

Source and Purity:

Rabbit polyclonal antibodies were produced by immunizing animals with a GST-fusion protein containing middle region of human DLG2. Antibodies were purified by affinity purification using immunogen.

Storage Buffer and Condition:

Supplied in 1 x PBS (pH 7.4), 100 ug/ml BSA, 40% Glycerol, 0.01% NaN₃. Store at -20 °C. Stable for 6 months from date of receipt.

Species Specificity:

Human, Mouse

Tested Applications:

WB: 1:1,000-1:3,000 (detect endogenous protein*)

*: The apparent protein size on WB may be different from the calculated M.W. due to modifications.

Product Data:

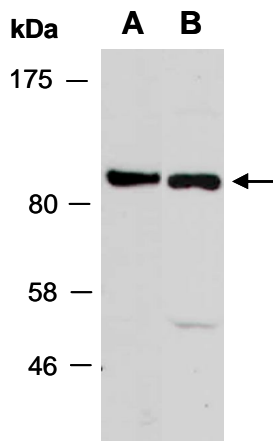


Fig 1. Western blot of total cell extracts from A) mouse brain, B) human HeLa; using anti-DLG2 (M) (R2888-2) at RT for 2 h.