



Order: (888)-282-5810 (Phone)  
(818)-707-0392 (Fax)  
[order@abiocode.com](mailto:order@abiocode.com)  
Web: [www.Abiocode.com](http://www.Abiocode.com)

---

## **ELF5 (M2) Antibody, Rabbit Polyclonal**

**Cat#:** R2893-3

**Quantity:** 100 ul

**Predicted | Observed M.W.:** 31 kDa

**Lot#:** Refer to vial

**Application:** WB

**Uniprot ID:** Q8VDK3

### **Background:**

ETS-related transcription factor ELF-5 is a member of an epithelium-specific subclass of the Ets transcription factor family. In addition to its role in regulating the later stages of terminal differentiation of keratinocytes, it appears to regulate a number of epithelium-specific genes found in tissues containing glandular epithelium such as salivary gland and prostate. It has very low affinity to DNA due to its negative regulatory domain at the amino terminus. Several alternatively spliced transcript variants encoding different isoforms have been described for this gene [provided by RefSeq].

### **Other Names:**

ETS-related transcription factor Elf-5, E74-like factor 5, Epithelium-restricted ESE-1-related Ets factor, Epithelium-specific Ets transcription factor 2, ESE-2, ESE2

### **Source and Purity:**

Rabbit polyclonal antibodies were produced by immunizing animals with a GST-fusion protein containing the C-terminal region of mouse ELF5. Antibodies were purified by affinity purification using immunogen.

### **Storage Buffer and Condition:**

Supplied in 1 x PBS (pH 7.4), 100 ug/ml BSA, 40% Glycerol, 0.01% NaN<sub>3</sub>. Store at -20 °C. Stable for 6 months from date of receipt.

### **Species Specificity:**

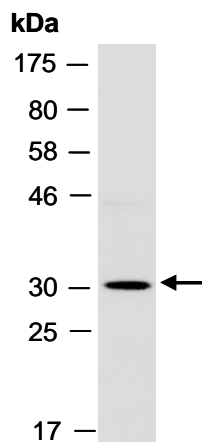
Mouse

### **Tested Applications:**

WB: 1:1,000-1:3,000 (detect endogenous protein\*)

\*: The apparent protein size on WB may be different from the calculated M.W. due to modifications.

**Product Data:**



**Fig 1.** Western blot of total cell extracts from mouse brain; using anti-ELF5 (M2) (R2893-3) at RT for 2 h.