



Order: (888)-282-5810 (Phone)
(818)-707-0392 (Fax)
order@abiocode.com
Web: www.Abiocode.com

RABEP1 (N) Antibody, Rabbit Polyclonal

Cat#: R2904-1

Quantity: 100 ul

Predicted | Observed M.W.: 99 kDa

Lot#: Refer to vial

Application: WB

Uniprot ID: Q15276

Background:

RABEP1 acts as linker between gamma-adaptin, RAB4A and RAB5A. RABEP1 is involved in endocytic membrane fusion and membrane trafficking of recycling endosomes. RABEP1 stimulates RABGEF1 mediated nucleotide exchange on RAB5A.

Other Names:

Rab GTPase-binding effector protein 1, Rabaptin-4, Rabaptin-5, Rabaptin-5alpha
Renal carcinoma antigen NY-REN-17, RAB5EP, RABPT5, RABPT5A

Source and Purity:

Rabbit polyclonal antibodies were produced by immunizing animals with a GST-fusion protein containing N-terminal region of human RABEP1. Antibodies were purified by affinity purification using immunogen.

Storage Buffer and Condition:

Supplied in 1 x PBS (pH 7.4), 100 ug/ml BSA, 40% Glycerol, 0.01% NaN₃. Store at -20 °C. Stable for 6 months from date of receipt.

Species Specificity:

Human, Mouse

Tested Applications:

WB: 1:1,000-1:3,000 (detect endogenous protein*)

*: The apparent protein size on WB may be different from the calculated M.W. due to modifications.

Product Data:

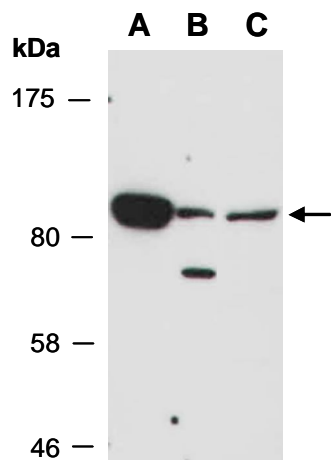


Fig 1. Western blot of total cell extracts from A) mouse brain, B) mouse thymus, C) human Jurkat; using anti-RABEP1 (N) (R2904-1) at RT for 2 h.