



Order: (888)-282-5810 (Phone)  
(818)-707-0392 (Fax)  
[order@abiocode.com](mailto:order@abiocode.com)  
Web: [www.Abiocode.com](http://www.Abiocode.com)

---

## **KLOTTHO (N1) Antibody, Rabbit Polyclonal**

**Cat#: R3086-1**

**Quantity: 100 ul**

**Predicted | Observed M.W.: 116, 62 | 160 kDa**

**Lot#: Refer to vial**

**Application: WB**

**Uniprot ID: Q9UEF7**

### **Background:**

KLOTTHO may have weak glycosidase activity towards glucuronylated steroids. However, it lacks essential active site Glu residues at positions 239 and 872, suggesting that it may be inactive as a glycosidase in vivo. KLOTTHO may be involved in the regulation of calcium and phosphorus homeostasis by inhibiting the synthesis of active vitamin D. The Klotho peptide generated by cleavage of the membrane-bound isoform may be an anti-aging circulating hormone which would extend life span by inhibiting insulin/IGF1 signaling. Two isoforms of KLOTTHO have been identified: 116 kD membrane-bound and 62 kD secreted KLOTTHO.

### **Other Names:**

KL

### **Source and Purity:**

Rabbit polyclonal antibodies were produced by immunizing animals with a GST-fusion protein containing the N-terminal region of human KLOTTHO. Antibodies were purified by affinity purification using immunogen.

### **Storage Buffer and Condition:**

Supplied in 1 x PBS (pH 7.4), 100 ug/ml BSA, 40% Glycerol, 0.01% NaN<sub>3</sub>. Store at -20 °C. Stable for 6 months from date of receipt.

### **Species Specificity:**

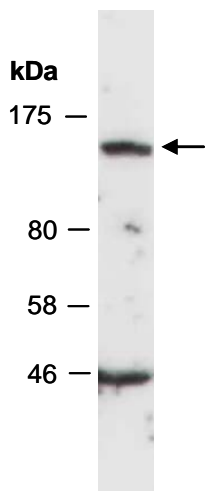
Human, Mouse

### **Tested Applications:**

WB: 1:1,000-1:3,000 (detect endogenous protein\*)

\*: The apparent protein size on WB may be different from the calculated M.W. due to modifications.

**Product Data:**



**Fig 1.** Western blot of total cell extracts from mouse thymus; using anti-KLOTHO (N1) (R3086-1) at RT for 2 h.