



Order: (888)-282-5810 (Phone)
(818)-707-0392 (Fax)
order@abiocode.com
Web: www.Abiocode.com

TIM21 (N) Antibody, Rabbit Polyclonal

Cat#: R3108-1

Quantity: 100 ul

Predicted | Observed M.W.: 28 | 30 kDa

Lot#: Refer to vial

Application: WB

Uniprot ID: Q9BVV7

Background:

TIM21 is a single pass membrane protein. It participates in the translocation of transit peptide-containing proteins across the mitochondrial inner membrane. TIM21 is also required for assembly of mitochondrial respiratory chain complex I and complex IV as component of some MITRAC complex, a cytochrome c oxidase (COX) assembly intermediate complex. TIM21 probably shuttles between the presequence translocase and respiratory-chain assembly intermediates in a process that promotes incorporation of early nuclear-encoded subunits into these complexes.

Other Names:

Mitochondrial import inner membrane translocase subunit Tim21, Mitochondrial import inner membrane translocase subunit Tim21, C18orf55, HSPC154, TIMM21

Source and Purity:

Rabbit polyclonal antibodies were produced by immunizing animals with a GST-fusion protein containing N-terminal region of human TIM21. Antibodies were purified by affinity purification using immunogen.

Storage Buffer and Condition:

Supplied in 1 x PBS (pH 7.4), 100 ug/ml BSA, 40% Glycerol, 0.01% NaN₃. Store at -20 °C. Stable for 6 months from date of receipt.

Species Specificity:

Human

Tested Applications:

WB: 1:1,000-1:3,000 (detect endogenous protein*)

*: The apparent protein size on WB may be different from the calculated M.W. due to modifications.

Product Data:

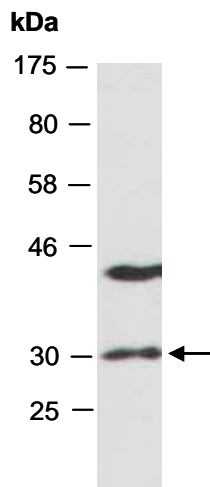


Fig 1. Western blot of total cell extracts from human HeLa; using anti-TIM21 (N) (R3108-1) at RT for 2 h.