



Order: (888)-282-5810 (Phone)
(818)-707-0392 (Fax)
order@abiocode.com
Web: www.Abiocode.com

CPEB2 (M) Antibody, Rabbit Polyclonal

Cat#: R3122-2

Quantity: 100 ul

Predicted | Observed M.W.: 65 | 70 kDa

Lot#: Refer to vial

Application: WB

Uniprot ID: Q7Z5Q1

Background:

Cytoplasmic polyadenylation element-binding protein 2 (CPEB2) is a cytoplasmic protein that belongs to the RRM CPEB family. CPEB2 may play a role in translational regulation of stored mRNAs in transcriptionally inactive haploid spermatids. CPEB2 binds to poly(U) RNA oligomers.

Other Names:

Cytoplasmic polyadenylation element-binding protein 2, CPE-BP2, CPE-binding protein 2, hCPEB-2

Source and Purity:

Rabbit polyclonal antibodies were produced by immunizing animals with a GST-fusion protein containing the middle region of human CPEB2. Antibodies were purified by affinity purification using immunogen.

Storage Buffer and Condition:

Supplied in 1 x PBS (pH 7.4), 100 ug/ml BSA, 40% Glycerol, 0.01% NaN₃. Store at -20 °C. Stable for 6 months from date of receipt.

Species Specificity:

Human

Tested Applications:

WB: 1:1,000-1:3,000 (detect endogenous protein*)

*: The apparent protein size on WB may be different from the calculated M.W. due to modifications.

Product Data:

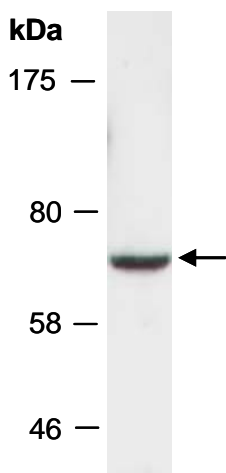


Fig 1. Western blot of total cell extracts from human HeLa; using anti-CPEB2 (M) (R3122-2) at RT for 2 h.