



Order: (888)-282-5810 (Phone)
(818)-707-0392 (Fax)
order@abiocode.com
Web: www.Abiocode.com

FAM105B (C) Antibody, Rabbit Polyclonal

Cat#: R3134-2

Quantity: 100 ul

Predicted | Observed M.W.: 40 kDa

Lot#: Refer to vial

Application: WB

Uniprot ID: Q96BN8

Background:

FAM105B is a deubiquitinase that specifically removes linear ('M-1'-linked) polyubiquitin chains to substrates and acts as a regulator of angiogenesis and innate immune response. FAM105B associates with the LUBAC complex via direct interaction with RNF31 and counteracts its action by cleaving linear polyubiquitin chains to substrates. FAM105B is required during angiogenesis, craniofacial and neuronal development by regulating the canonical Wnt signaling together with the LUBAC complex. FAM105B also acts as a negative regulator of NF-kappa-B by counteracting activity of the LUBAC complex. FAM105B plays a key role in innate immune response and is required to restrict linear polyubiquitin formation on RIPK2 in response to NOD2 stimulation, probably to limit NOD2-dependent proinflammatory signaling.

Other Names:

Ubiquitin thioesterase otulin, Deubiquitinating enzyme otulin, OTU domain-containing deubiquitinase with linear linkage specificity, Ubiquitin thioesterase Gumby

Source and Purity:

Rabbit polyclonal antibodies were produced by immunizing animals with a GST-fusion protein containing the N-terminal region of human FAM105B. Antibodies were purified by affinity purification using immunogen.

Storage Buffer and Condition:

Supplied in 1 x PBS (pH 7.4), 100 ug/ml BSA, 40% Glycerol, 0.01% NaN₃. Store at -20 °C. Stable for 6 months from date of receipt.

Species Specificity:

Human, Mouse

Tested Applications:

WB: 1:1,000-1:3,000 (detect endogenous protein*)

*: The apparent protein size on WB may be different from the calculated M.W. due to modifications.

Product Data:

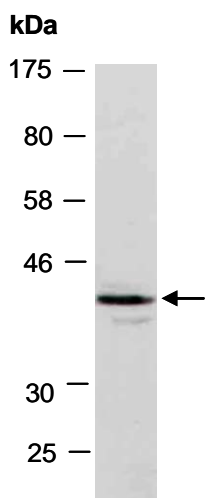


Fig 1. Western blot of total cell extracts from mouse brain; using anti-FAM105B (C) (R3134-2) at RT for 2 h.