



Order: (888)-282-5810 (Phone)
(818)-707-0392 (Fax)
order@abiocode.com
Web: www.Abiocode.com

EME1 (N) Antibody, Rabbit Polyclonal

Cat#: R3249-1

Quantity: 100 ul

Predicted | Observed M.W.: 63 | 58 kDa

Lot#: Refer to vial

Application: WB

Uniprot ID: Q96AY2

Background:

Crossover junction endonuclease EME1 interacts with MUS81 to form a DNA structure-specific endonuclease with substrate preference for branched DNA structures with a 5'-end at the branch nick. Typical substrates include 3'-flap structures, replication forks and nicked Holliday junctions. EME1 may be required in mitosis for the processing of stalled or collapsed replication forks.

Other Names:

Crossover junction endonuclease EME1, MMS4 homolog, hMMS4, MMS4

Source and Purity:

Rabbit polyclonal antibodies were produced by immunizing animals with a GST-fusion protein containing N-terminal region of human EME1. Antibodies were purified by affinity purification using immunogen.

Storage Buffer and Condition:

Supplied in 1 x PBS (pH 7.4), 100 ug/ml BSA, 40% Glycerol, 0.01% NaN₃. Store at -20 °C. Stable for 6 months from date of receipt.

Species Specificity:

Human

Tested Applications:

WB: 1:1,000-1:3,000 (detect endogenous protein*)

*: The apparent protein size on WB may be different from the calculated M.W. due to modifications.

Product Data:

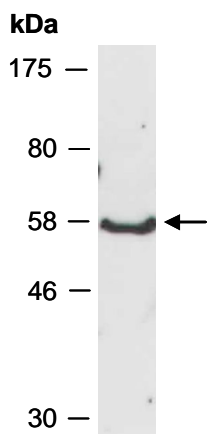


Fig 1. Western blot of total cell extracts from human HeLa; using anti-EME1 (N) (R3249-1) at RT for 2 h.