



Order: (888)-282-5810 (Phone)
(818)-707-0392 (Fax)
order@abiocode.com
Web: www.Abiocode.com

KNAT2 (C) Antibody, Rabbit Polyclonal

Cat#: R3158-2

Quantity: 100 ul

Predicted | Observed M.W.: 36 | 24 kDa

Lot#: Refer to vial

Application: WB

Uniprot ID: P46640

Background:

KNAT2 is a nuclear protein that belongs to the TALE/KNOX homeobox family. KNAT2 probably binds to the DNA sequence 5'-TGAC-3', and may play a role in meristem function. KNAT2 may be involved in maintaining cells in an undifferentiated, meristematic state. KNAT2 is expressed predominantly in shoot apices of seedlings, in the receptacle and developing pistil of flowers and in axillary buds of inflorescence stems.

Other Names:

Homeobox protein knotted-1-like 2, Protein ATK1, Protein KNAT2

Source and Purity:

Rabbit polyclonal antibodies were produced by immunizing animals with a GST-fusion protein containing the C-terminal region of *arabidopsis thaliana* KNAT2 (At1g70510). Antibodies were purified by affinity purification using immunogen.

Storage Buffer and Condition:

Supplied in 1 x PBS (pH 7.4), 100 ug/ml BSA, 40% Glycerol, 0.01% NaN₃. Store at -20 °C. Stable for 6 months from date of receipt.

Species Specificity:

Arabidopsis thaliana

Tested Applications:

WB: 1:1,000-1:3,000 (detect endogenous protein*)

*: The apparent protein size on WB may be different from the calculated M.W. due to modifications.

Product Data:

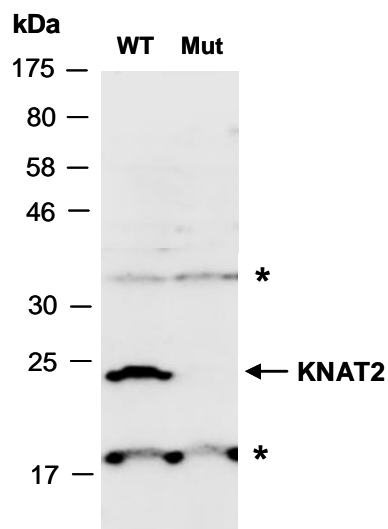


Fig 1. Western blot of equal amounts of protein extracts from the flowers of WT or KNAT2 deficient mutant (Mut) Arabidopsis; using anti-KNAT2 (C) (R3158-2) at RT for 2 h. The observed M.W. of KNAT2 is approximately 24 kD. * indicates non-specific proteins.