



Order: (888)-282-5810 (Phone)
(818)-707-0392 (Fax)
order@abiocode.com
Web: www.Abiocode.com

CXCL10 (C1) Antibody, Rabbit Polyclonal

Cat#: R0385-1

Quantity: 100 ul

Predicted | Observed M.W.: 11 kDa

Lot#: Refer to vial

Application: WB

Uniprot ID: P17515

Background:

C-X-C motif chemokine 10 (CXCL10) belongs to the intercrine alpha (chemokine Cx) family. In addition to its role as a proinflammatory cytokine, CXCL10 may participate in T-cell effector function and perhaps T-cell development.

Other Names:

C-X-C motif chemokine 10, 10 kDa interferon gamma-induced protein, Interferon-gamma induced protein CRG-2, Gamma-IP10, IP-10, C7, Small-inducible cytokine B10, INP10, SCYB10, Crg2, Ifi10

Source and Purity:

Rabbit polyclonal antibodies were produced by immunizing animals with a GST-fusion protein containing C-terminal region of mouse CXCL10. Antibodies were purified by affinity purification using immunogen.

Storage Buffer and Condition:

Supplied in 1 x PBS (pH 7.4), 100 ug/ml BSA, 40% Glycerol, 0.01% NaN₃. Store at -20 °C. Stable for 6 months from date of receipt.

Species Specificity:

Mouse

Tested Applications:

WB: 1:1,000-1:3,000 (detect endogenous protein*)

*: The apparent protein size on WB may be different from the calculated M.W. due to modifications.

Product Data:

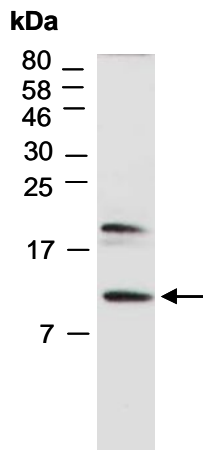


Fig 1. Western blot of total cell extracts from mouse thymus; using anti-CXCL10 (C1) (R0385-1) at RT for 2 h.