



Order: (888)-282-5810 (Phone)
(818)-707-0392 (Fax)
order@abiocode.com
Web: www.Abiocode.com

SLC15A2 (C) Antibody, Rabbit Polyclonal

Cat#: R0564-1

Quantity: 100 ul

Predicted | Observed M.W.: 82 | 95 kDa

Lot#: Refer to vial

Application: WB

Uniprot ID: Q16348

Background:

Solute carrier family 15 member 2 (SLC15A2) is a multi-pass membrane protein that belongs to the PTR2/POT transporter (TC 2.A.17) family. It is involved in proton-coupled intake of oligopeptides of 2 to 4 amino acids with a preference for dipeptides.

Other Names:

Solute carrier family 15 member 2, Kidney H(+)/peptide cotransporter, Oligopeptide transporter, kidney isoform, Peptide transporter 2, PEPT2

Source and Purity:

Rabbit polyclonal antibodies were produced by immunizing animals with a GST-fusion protein containing C-terminal region of human SLC15A2. Antibodies were purified by affinity purification using immunogen.

Storage Buffer and Condition:

Supplied in 1 x PBS (pH 7.4), 100 ug/ml BSA, 40% Glycerol, 0.01% NaN₃. Store at -20 °C. Stable for 6 months from date of receipt.

Species Specificity:

Human, Mouse

Tested Applications:

WB: 1:1,000-1:3,000 (detect endogenous protein*)

*: The apparent protein size on WB may be different from the calculated M.W. due to modifications.

Product Data:

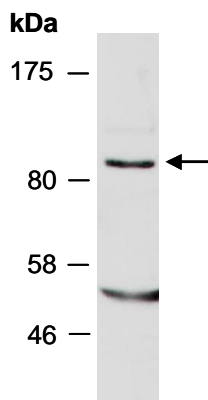


Fig 1. Western blot of total cell extracts from mouse brain; using anti-SLC15A2 (C) (R0564-1) at RT for 2 h.