



Order: (888)-282-5810 (Phone)
(818)-707-0392 (Fax)
order@abiocode.com
Web: www.Abiocode.com

SEN7 (C2) Antibody, Rabbit Polyclonal

Cat#: R0727-3

Quantity: 100 ul

Predicted | Observed M.W.: 120 kDa

Lot#: Refer to vial

Application: WB

Uniprot ID: Q9BQF6

Background:

Sentrin-specific protease 7 (SEN7) is a protease that deconjugates SUMO2 and SUMO3 from targeted proteins, but not SUMO1. It catalyzes the deconjugation of poly-SUMO2 and poly-SUMO3 chains. SEN7 has very low efficiency in processing full-length SUMO proteins to their mature forms.

Other Names:

Sentrin-specific protease 7, SUMO-1-specific protease 2, Sentrin/SUMO-specific protease SEN7, KIAA1707, SSP2, SUSP2

Source and Purity:

Rabbit polyclonal antibodies were produced by immunizing animals with a GST-fusion protein containing C-terminal region of human SEN7. Antibodies were purified by affinity purification using immunogen.

Storage Buffer and Condition:

Supplied in 1 x PBS (pH 7.4), 100 ug/ml BSA, 40% Glycerol, 0.01% NaN₃. Store at -20 °C. Stable for 6 months from date of receipt.

Species Specificity:

Human, Mouse

Tested Applications:

WB: 1:1,000-1:3,000 (detect endogenous protein*)

*: The apparent protein size on WB may be different from the calculated M.W. due to modifications.

Product Data:

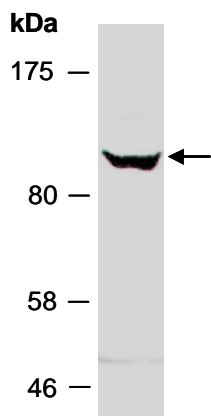


Fig 1. Western blot of total cell extracts from mouse brain; using anti-SEN7 (C2) (R0727-3) at RT for 2 h.