



Order: (888)-282-5810 (Phone)  
(818)-707-0392 (Fax)  
[order@abiocode.com](mailto:order@abiocode.com)  
Web: [www.Abiocode.com](http://www.Abiocode.com)

---

## LRP6 (N) Antibody, Rabbit Polyclonal

**Cat#:** R0819-1

**Quantity:** 100 ul

**Predicted | Observed M.W.:** 180 kDa

**Lot#:** Refer to vial

**Application:** WB

**Uniprot ID:** O75581

### **Background:**

Low-density lipoprotein receptor-related protein 6 (LRP6) is a single-pass type I membrane protein belonging to the LDLR family. LRP6 is a component of the Wnt-Fzd-LRP5-LRP6 complex that triggers beta-catenin signaling through inducing aggregation of receptor-ligand complexes into ribosome-sized signalsomes. LRP6 is a cell-surface coreceptor of Wnt/beta-catenin signaling, which plays a pivotal role in bone formation. LRP6 is also required for posterior patterning of the epiblast during gastrulation.

### **Other Names:**

Low-density lipoprotein receptor-related protein 6, LRP-6

### **Source and Purity:**

Rabbit polyclonal antibodies were produced by immunizing animals with a GST-fusion protein containing N-terminal region of human LRP6. Antibodies were purified by affinity purification using immunogen.

### **Storage Buffer and Condition:**

Supplied in 1 x PBS (pH 7.4), 100 ug/ml BSA, 40% Glycerol, 0.01% NaN<sub>3</sub>. Store at -20 °C. Stable for 6 months from date of receipt.

### **Species Specificity:**

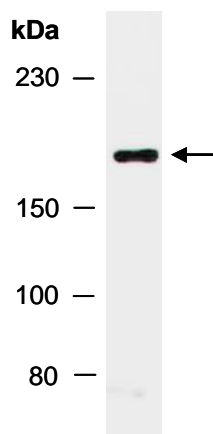
Human, Mouse

### **Tested Applications:**

WB: 1:1,000-1:3,000 (detect endogenous protein\*)

\*: The apparent protein size on WB may be different from the calculated M.W. due to modifications.

**Product Data:**



**Fig 1.** Western blot of total cell extracts from mouse thymus; using anti-LRP6 (N) (R0819-1) at RT for 2 h.