



Order: (888)-282-5810 (Phone)
(818)-707-0392 (Fax)
order@abiocode.com
Web: www.Abiocode.com

CCL18 (N) Antibody, Rabbit Polyclonal

Cat#: R1009-1

Quantity: 100 ul

Predicted | Observed M.W.: 10 | 30 kDa

Lot#: Refer to vial

Application: WB

Uniprot ID: P55774

Background:

C-C motif chemokine 18 (CCL18) belongs to the intercrine beta (chemokine CC) family. CCL18 is a chemotactic factor that attracts lymphocytes but not monocytes or granulocytes. CCL18 may be involved in B-cell migration into B-cell follicles in lymph nodes. Additionally, CCL18 attracts naive T-lymphocytes toward dendritic cells and activated macrophages in lymph nodes; CCL18 has chemotactic activity for naive T-cells, CD4+ and CD8+ T-cells and thus, CCL18 may play a role in both humoral and cell-mediated immunity responses.

Other Names:

C-C motif chemokine 18, Alternative macrophage activation-associated CC chemokine 1, AMAC-1, CC chemokine PARC, Dendritic cell chemokine 1, DC-CK1, Macrophage inflammatory protein 4, MIP-4, Pulmonary and activation-regulated chemokine, Small-inducible cytokine A18, AMAC1, DCCK1, MIP4, PARC, SCYA18

Source and Purity:

Rabbit polyclonal antibodies were produced by immunizing animals with a GST-fusion protein containing N-terminal region of human CCL18. Antibodies were purified by affinity purification using immunogen.

Storage Buffer and Condition:

Supplied in 1 x PBS (pH 7.4), 100 ug/ml BSA, 40% Glycerol, 0.01% NaN₃. Store at -20 °C. Stable for 6 months from date of receipt.

Species Specificity:

Human, Mouse

Tested Applications:

WB: 1:1,000-1:3,000 (detect endogenous protein*)

*: The apparent protein size on WB may be different from the calculated M.W. due to modifications.

Product Data:

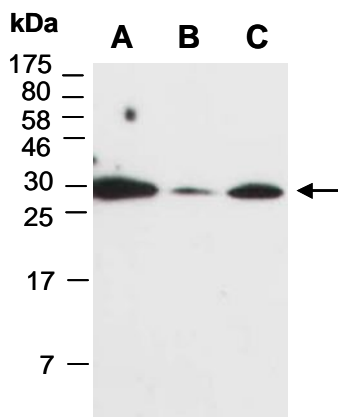


Fig 1. Western blot of total cell extracts from A) mouse thymus, B) human HeLa, C) human Jurkat; using anti-CCL18 (N) (R1009-1) at RT for 2 h.