



Order: (888)-282-5810 (Phone)
(818)-707-0392 (Fax)
order@abiocode.com
Web: www.Abiocode.com

ALCAM (M) Antibody, Rabbit Polyclonal

Cat#: R1105-1

Quantity: 100 ul

Predicted | Observed M.W.: 65 | 95 kDa

Lot#: Refer to vial

Application: WB

Uniprot ID: Q61490

Background:

ALCAM (CD166 antigen) is a cell adhesion molecule that binds to CD6. It is involved in neurite extension by neurons via heterophilic and homophilic interactions. Furthermore, ALCAM may play a role in the binding of T- and B-cells to activated leukocytes, as well as in interactions between cells of the nervous system.

Other Names:

CD166 antigen, Activated leukocyte cell adhesion molecule, Protein DM-GRASP

Source and Purity:

Rabbit polyclonal antibodies were produced by immunizing animals with a GST-fusion protein containing middle region of human ALCAM. Antibodies were purified by affinity purification using immunogen.

Storage Buffer and Condition:

Supplied in 1 x PBS (pH 7.4), 100 ug/ml BSA, 40% Glycerol, 0.01% NaN₃. Store at -20 °C. Stable for 6 months from date of receipt.

Species Specificity:

Human, Mouse

Tested Applications:

WB: 1:1,000-1:3,000 (detect endogenous protein*)

*: The apparent protein size on WB may be different from the calculated M.W. due to modifications.

Product Data:

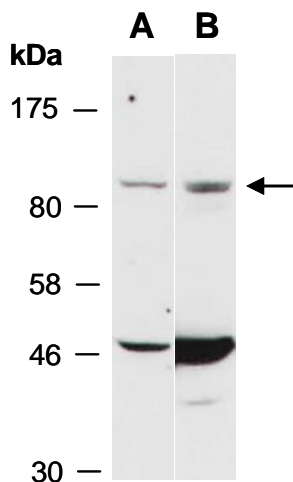


Fig 1. Western blot of total cell extracts from A) human Jurkat, B) mouse thymus; using anti-ALCAM (M) (R1105-1) at RT for 2 h.