



Order: (888)-282-5810 (Phone)  
(818)-707-0392 (Fax)  
[order@abiocode.com](mailto:order@abiocode.com)  
Web: [www.Abiocode.com](http://www.Abiocode.com)

---

## **PTAFR (M) Antibody, Rabbit Polyclonal**

**Cat#:** R1134-1

**Quantity:** 100 ul

**Predicted | Observed M.W.:** 39 | 48 kDa

**Lot#:** Refer to vial

**Application:** WB

**Uniprot ID:** P25105

### **Background:**

Platelet-activating factor receptor (PTAFR) is a multi-pass membrane protein belonging to the G-protein coupled receptor 1 family. PTAFR is a receptor for platelet activating factor, a chemotactic phospholipid mediator that possesses potent inflammatory, smooth-muscle contractile and hypotensive activity. PTAFR seems to mediate its action via a G protein that activates a phosphatidylinositol-calcium second messenger system.

### **Other Names:**

Platelet-activating factor receptor, PAF-R, PAFR

### **Source and Purity:**

Rabbit polyclonal antibodies were produced by immunizing animals with a GST-fusion protein containing middle region of human PTAFR. Antibodies were purified by affinity purification using immunogen.

### **Storage Buffer and Condition:**

Supplied in 1 x PBS (pH 7.4), 100 ug/ml BSA, 40% Glycerol, 0.01% NaN<sub>3</sub>. Store at -20 °C. Stable for 6 months from date of receipt.

### **Species Specificity:**

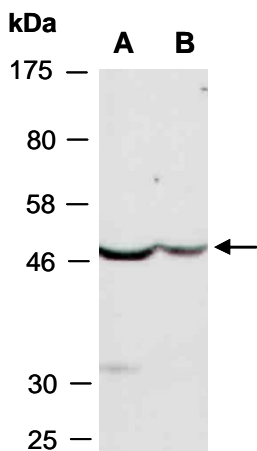
Human, Mouse

### **Tested Applications:**

WB: 1:1,000-1:3,000 (detect endogenous protein\*)

\*: The apparent protein size on WB may be different from the calculated M.W. due to modifications.

**Product Data:**



**Fig 1.** Western blot of total cell extracts from A) mouse brain, B) mouse thymus; using anti-PTAFR (M) (R1134-1) at RT for 2 h.