



Order: (888)-282-5810 (Phone)  
(818)-707-0392 (Fax)  
[order@abiocode.com](mailto:order@abiocode.com)  
Web: [www.Abiocode.com](http://www.Abiocode.com)

---

## TOC1 (vPair™) Antibodies

**Cat#: R3139-vp**

**Lot#: Refer to vial**

**Predicted | Observed M.W.: 69 | 75 kDa**

**Uniprot ID: Q9LKL2**

**Application: WB**

**Quantity:** 50 ul TOC1 (N) (R3139-1) Rabbit Polyclonal Antibody &  
50 ul TOC1 (C) (R3139-2) Rabbit Polyclonal Antibody

### **Product Introduction:**

vPair™ antibodies represent a pair of fully characterized antibodies that recognize two different regions of a target protein. The product is developed by Abiocode to address whether the signal observed truly represents the protein of interest, an often encountered issue in antibody-based assays. The use of a pair of fully characterized vPair™ antibodies in the same assay can validate signal specificity since vPair™ antibodies recognize two independent epitopes of the same protein. Different sets of vPair™ antibodies are developed at Abiocode to work with specific applications, including antibody arrays, Western blot, IP-Western, ChIP, IHC, and FACS.

### **Background:**

TOC1 is a Pseudo response regulator involved in the generation of circadian rhythms. TOC1 appears to shorten the period of circumnutation speed. TOC1 contributes to the plant fitness (carbon fixation, biomass) by influencing the circadian clock period. PRR3 may increase the stability of TOC1 by preventing interactions between TOC1 and the F-box protein ZTL. Expression of TOC1 is correlated with rhythmic changes in chromatin organization [provided by TAIR].

### **Other Names:**

Two-component response regulator-like APRR1, ABI3-interacting protein 1, Pseudo-response regulator 1, Timing of CAB expression 1, APRR1, ATTOC1, PRR1, PSEUDO-RESPONSE REGULATOR 1, TIMING OF CAB EXPRESSION 1, AIP1

### **Source and Purity:**

Rabbit polyclonal antibodies were produced by immunizing animals with GST-fusion proteins containing either the N-terminal [TOC1 (N) (R3139-1)] or the C-terminal [TOC1 (C) (R3139-2)] region of *arabidopsis thaliana* TOC1 (At5g61380). Antibodies were purified by affinity purification using immunogen.

**Species Specificity:**

Arabidopsis thaliana

**Storage Buffer and Condition:**

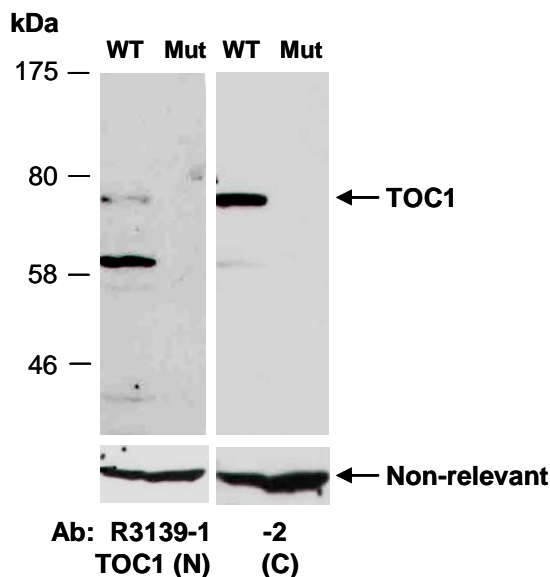
Supplied in 1 x PBS (pH 7.4), 100 ug/ml BSA, 40% Glycerol, 0.01% NaN<sub>3</sub>. Store at -20 °C. Stable for 6 months from date of receipt.

**Tested Applications:**

WB: 1:1,000-1:3,000 (detect endogenous protein\*)

\*: The apparent protein size on WB may be different from the calculated M.W. due to modifications.

**Product Data:**



**Fig 1.** Western blot of equal amounts of protein extracts from WT or TOC1 deficient mutant (Mut) arabidopsis; using 2 independent Abs against 2 distinct regions of arabidopsis TOC1 (At5g61380) at RT for 2 h. The same filters were re-probed with a non-relevant Ab for loading controls.