



Order: (888)-282-5810 (Phone)  
(818)-707-0392 (Fax)  
[order@abiocode.com](mailto:order@abiocode.com)  
Web: [www.Abiocode.com](http://www.Abiocode.com)

---

## **RIPK2 (C) Antibody, Rabbit Polyclonal**

**Cat#: R1317-2**

**Quantity: 100 ul**

**Predicted | Observed M.W.: 61 kDa**

**Lot#: Refer to vial**

**Application: WB**

**Uniprot ID: O43353**

### **Background:**

Receptor-interacting serine/threonine-protein kinase 2 (RIPK2) belongs to the protein kinase superfamily and the TKL Ser/Thr protein kinase family. RIPK2 is a serine/threonine/tyrosine kinase that plays an essential role in modulation of innate and adaptive immune responses. NF-kappa-B is released from NF-kappa-B inhibitors and translocates into the nucleus where it activates the transcription of hundreds of genes involved in immune response, growth control, or protection against apoptosis. RIPK2 also plays a role during engagement of the T-cell receptor (TCR) in promoting BCL10 phosphorylation and subsequent NF-kappa-B activation.

### **Other Names:**

Receptor-interacting serine/threonine-protein kinase 2, CARD-containing interleukin-1 beta-converting enzyme-associated kinase, CARD-containing IL-1 beta ICE-kinase, RIP-like-interacting CLARP kinase, Receptor-interacting protein 2, RIP-2, Tyrosine-protein kinase RIPK2, CARDIAK, RICK, RIP2

### **Source and Purity:**

Rabbit polyclonal antibodies were produced by immunizing animals with a GST-fusion protein containing C-terminal region of human RIPK2. Antibodies were purified by affinity purification using immunogen.

### **Storage Buffer and Condition:**

Supplied in 1 x PBS (pH 7.4), 100 ug/ml BSA, 40% Glycerol, 0.01% NaN<sub>3</sub>. Store at -20 °C. Stable for 6 months from date of receipt.

### **Species Specificity:**

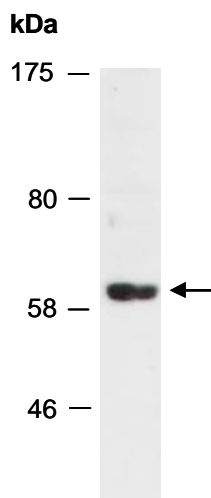
Human, Mouse

### **Tested Applications:**

WB: 1:1,000-1:3,000 (detect endogenous protein\*)

\*: The apparent protein size on WB may be different from the calculated M.W. due to modifications.

**Product Data:**



**Fig 1.** Western blot of total cell extracts from mouse thymus; using anti-RIPK2 (C) (R1317-2) at RT for 2 h.