



Order: (888)-282-5810 (Phone)
(818)-707-0392 (Fax)
order@abiocode.com
Web: www.Abiocode.com

PGRMC1 (C) Antibody, Rabbit Polyclonal

Cat#: R1924-2

Lot#: Refer to vial

Quantity: 100 ul

Application: WB

Predicted | Observed M.W.: 22 kDa

Uniprot ID: O00264

Background:

PGRMC1 (membrane-associated progesterone receptor component 1) is a receptor for progesterone. It is widely expressed, with highest expression in liver and kidney. The cytochrome b5 heme-binding domain lacks the conserved iron-binding His residues at positions 107 and 131.

Other Names:

Membrane-associated progesterone receptor component 1, HPR6.6, PGRMC

Source and Purity:

Rabbit polyclonal antibodies were produced by immunizing animals with a GST-fusion protein containing C-terminal region of human PGRMC1. Antibodies were purified by affinity purification using immunogen.

Storage Buffer and Condition:

Supplied in 1 x PBS (pH 7.4), 100 ug/ml BSA, 40% Glycerol, 0.01% NaN₃. Store at -20 °C. Stable for 6 months from date of receipt.

Species Specificity:

Human

Tested Applications:

WB: 1:1,000-1:3,000 (detect endogenous protein*)

*: The apparent protein size on WB may be different from the calculated M.W. due to modifications.

Product Data:

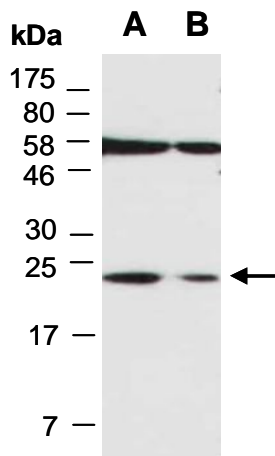


Fig 1. Western blot of total cell extracts from A) human HeLa, B) human Jurkat; using anti-PGRMC1 (C) (R1924-2) at RT for 2 h.