



Order: (888)-282-5810 (Phone)  
(818)-707-0392 (Fax)  
[order@abiocode.com](mailto:order@abiocode.com)  
Web: [www.Abiocode.com](http://www.Abiocode.com)

---

## **CDC42BPA (N) Antibody, Rabbit Polyclonal**

**Cat#: R1928-1**

**Quantity: 100 ul**

**Predicted | Observed M.W.: 197 kDa**

**Lot#: Refer to vial**

**Application: WB**

**Uniprot ID: Q5VT25**

### **Background:**

Serine/threonine-protein kinase MRCK alpha (CDC42BPA) belongs to the protein kinase superfamily, the AGC Ser/Thr protein kinase family, and the DMPK subfamily. CDC42BPA is a serine/threonine-protein kinase which is an important downstream effector of CDC42 and plays a role in the regulation of cytoskeleton reorganization and cell migration. CDC42BPA regulates actin cytoskeletal reorganization via phosphorylation of PPP1R12C and MYL9/MLC2. In concert with MYO18A and LURAP1, CDC42BPA is involved in modulating lamellar actomyosin retrograde flow that is crucial to cell protrusion and migration. CDC42BPA may also play a role in TFRC-mediated iron uptake.

### **Other Names:**

Serine/threonine-protein kinase MRCK alpha, CDC42-binding protein kinase alpha, DMPK-like alpha, Myotonic dystrophy kinase-related CDC42-binding kinase alpha, MRCK alpha, Myotonic dystrophy protein kinase-like alpha, KIAA0451

### **Source and Purity:**

Rabbit polyclonal antibodies were produced by immunizing animals with a GST-fusion protein containing N-terminal region of human CDC42BPA. Antibodies were purified by affinity purification using immunogen.

### **Storage Buffer and Condition:**

Supplied in 1 x PBS (pH 7.4), 100 ug/ml BSA, 40% Glycerol, 0.01% NaN<sub>3</sub>. Store at -20 °C. Stable for 6 months from date of receipt.

### **Species Specificity:**

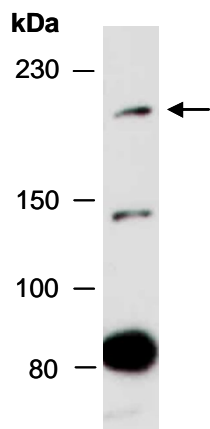
Human, Mouse

### **Tested Applications:**

WB: 1:1,000-1:3,000 (detect endogenous protein\*)

\*: The apparent protein size on WB may be different from the calculated M.W. due to modifications.

**Product Data:**



**Fig 1.** Western blot of total cell extracts from mouse thymus; using anti-CDC42BPA (N) (R1928-1) at RT for 2 h.