



Order: (888)-282-5810 (Phone)
(818)-707-0392 (Fax)
order@abiocode.com
Web: www.Abiocode.com

CDC42EP2 (M) Antibody, Rabbit Polyclonal

Cat#: R1929-1

Quantity: 100 ul

Predicted | Observed M.W.: 22 | 25 kDa

Lot#: Refer to vial

Application: WB

Uniprot ID: O14613

Background:

CDC42EP2 is probably involved in the organization of the actin cytoskeleton. May act downstream of CDC42 to induce actin filament assembly leading to cell shape changes. Induces pseudopodia formation in fibroblasts in a CDC42-dependent manner.

Other Names:

Cdc42 effector protein 2, BORG1, CEP2, Binder of Rho GTPases 1

Source and Purity:

Rabbit polyclonal antibodies were produced by immunizing animals with a GST-fusion protein containing middle region of human CDC42EP2. Antibodies were purified by affinity purification using immunogen.

Storage Buffer and Condition:

Supplied in 1 x PBS (pH 7.4), 100 ug/ml BSA, 40% Glycerol, 0.01% NaN₃. Store at -20 °C. Stable for 6 months from date of receipt.

Species Specificity:

Human, Mouse

Tested Applications:

WB: 1:1,000-1:3,000 (detect endogenous protein*)

*: The apparent protein size on WB may be different from the calculated M.W. due to modifications.

Product Data:

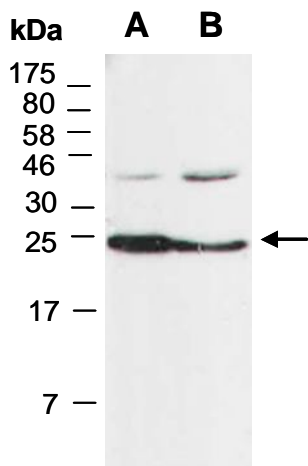


Fig 1. Western blot of total cell extracts from A) human HeLa, B) human Jurkat; using anti-CDC42EP2 (M) (R1929-1) at RT for 2 h.