



Order: (888)-282-5810 (Phone)
(818)-707-0392 (Fax)
order@abiocode.com
Web: www.Abiocode.com

CDC42EP1 (N) Antibody, Rabbit Polyclonal

Cat#: R1934-1

Quantity: 100 ul

Predicted | Observed M.W.: 40 | 44 kDa

Lot#: Refer to vial

Application: WB

Uniprot ID: Q00587

Background:

Cdc42 effector protein 1 (CDC42EP1) belongs to the BORG/CEP family. CDC42EP1 is probably involved in the organization of the actin cytoskeleton and has also been shown to induce membrane extensions in fibroblasts.

Other Names:

Cdc42 effector protein 1, Binder of Rho GTPases 5, Serum protein MSE55, BORG5, CEP1, MSE55

Source and Purity:

Rabbit polyclonal antibodies were produced by immunizing animals with a GST-fusion protein containing N-terminal region of human CDC42EP1. Antibodies were purified by affinity purification using immunogen.

Storage Buffer and Condition:

Supplied in 1 x PBS (pH 7.4), 100 ug/ml BSA, 40% Glycerol, 0.01% NaN₃. Store at -20 °C. Stable for 6 months from date of receipt.

Species Specificity:

Human, Mouse

Tested Applications:

WB: 1:1,000-1:3,000 (detect endogenous protein*)

*: The apparent protein size on WB may be different from the calculated M.W. due to modifications.

Product Data:

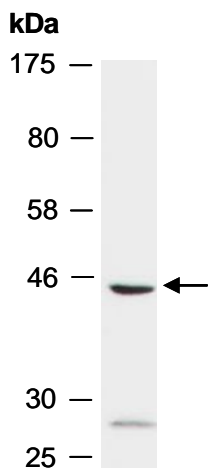


Fig 1. Western blot of total cell extracts from mouse brain; using anti-CDC42EP1 (N) (R1934-1) at RT for 2 h.