



Order: (888)-282-5810 (Phone)
(818)-707-0392 (Fax)
order@abiocode.com
Web: www.Abiocode.com

IKBKE (C1) Antibody, Rabbit Polyclonal

Cat#: R1997-3

Quantity: 100 ul

Predicted | Observed M.W.: 80 kDa

Lot#: Refer to vial

Application: WB

Uniprot ID: Q14164

Background:

Phosphorylates inhibitors of NF-kappa-B thus leading to the dissociation of the inhibitor/NF-kappa-B complex and ultimately the degradation of the inhibitor. IKBKE may play a special role in the immune response. Protects cells against DNA damage-induced cell death.

Other Names:

Inhibitor of nuclear factor kappa-B kinase subunit epsilon, Inducible I kappa-B kinase, IKKE, IKKI, KIAA0151

Source and Purity:

Rabbit polyclonal antibodies were produced by immunizing animals with a GST-fusion protein containing C-terminal region of human IKBKE. Antibodies were purified by affinity purification using immunogen.

Storage Buffer and Condition:

Supplied in 1 x PBS (pH 7.4), 100 ug/ml BSA, 40% Glycerol, 0.01% NaN₃. Store at -20 °C. Stable for 6 months from date of receipt.

Species Specificity:

Human

Tested Applications:

WB: 1:1,000-1:3,000 (detect endogenous protein*)

*: The apparent protein size on WB may be different from the calculated M.W. due to modifications.

Product Data:

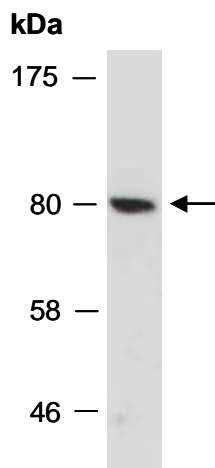


Fig 1. Western blot of total cell extracts from human HeLa; using anti-IKBKE (C1) (R1997-3) at RT for 2 h.