



Order: (888)-282-5810 (Phone)
(818)-707-0392 (Fax)
order@abiocode.com
Web: www.Abiocode.com

DCT (C) Antibody, Rabbit Polyclonal

Cat#: R0768-3

Quantity: 100 ul

Predicted | Observed MW: 59 kDa

Lot#: Refer to vial

Application: WB

Uniprot ID: P40126

Background:

L-dopachrome tautomerase (DCT) is a single-pass type I membrane protein belonging to the tyrosinase family. DCT is involved in regulating eumelanin and pheomelanin levels.

Other Names:

L-dopachrome tautomerase, DCT, DT, L-dopachrome Delta-isomerase, Tyrosinase-related protein 2, TRP-2, TRP2, TYRP2

Source and Purity:

Rabbit polyclonal antibodies were produced by immunizing animals with a GST-fusion protein containing the C-terminal region of human DCT. Antibodies were purified by affinity purification using immunogen.

Storage Buffer and Condition:

Supplied in 1 x PBS (pH 7.4), 100 ug/ml BSA, 40% Glycerol, 0.01% NaN₃. Store at -20 °C. Stable for 6 months from date of receipt.

Species Specificity:

Human

Tested Applications:

WB: 1:1,000-1:3,000 (detect endogenous protein*)

*: The apparent protein size on WB may be different from the calculated M.W. due to modifications.

Product Data:

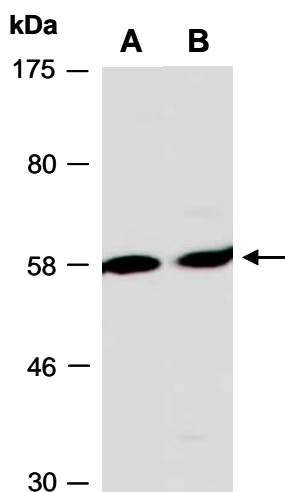


Fig 1. Western blot of total cell extracts from A) human HeLa, B) human Jurkat; using anti-DCT (C) (R0768-3) at RT for 2 h.