



Order: (888)-282-5810 (Phone)
(818)-707-0392 (Fax)
order@abiocode.com
Web: www.Abiocode.com

CDC23 (N) Antibody, Rabbit Polyclonal

Cat#: R0898-1

Quantity: 100 ul

Predicted | Observed MW: 69 | 65 kDa

Lot#: Refer to vial

Application: WB

Uniprot ID: Q9UJX2

Background:

Cell division cycle protein 23 homolog (CDC23) belongs to the APC8/CDC23 family. CDC23 is a component of the anaphase promoting complex/cyclosome (APC/C), a cell cycle-regulated E3 ubiquitin ligase that controls progression through mitosis and the G1 phase of the cell cycle. The APC/C complex acts by mediating ubiquitination and subsequent degradation of target proteins: it mainly mediates the formation of 'Lys-11'-linked polyubiquitin chains and, to a lower extent, the formation of 'Lys-48'- and 'Lys-63'-linked polyubiquitin chains.

Other Names:

Cell division cycle protein 23 homolog, ANAPC8, Anaphase-promoting complex subunit 8, APC8, Cyclosome subunit 8

Source and Purity:

Rabbit polyclonal antibodies were produced by immunizing animals with a GST-fusion protein containing the N-terminal region of human CDC23. Antibodies were purified by affinity purification using immunogen.

Storage Buffer and Condition:

Supplied in 1 x PBS (pH 7.4), 100 ug/ml BSA, 40% Glycerol, 0.01% NaN₃. Store at -20 °C. Stable for 6 months from date of receipt.

Species Specificity:

Human

Tested Applications:

WB: 1:1,000-1:3,000 (detect endogenous protein*)

*: The apparent protein size on WB may be different from the calculated M.W. due to modifications.

Product Data:

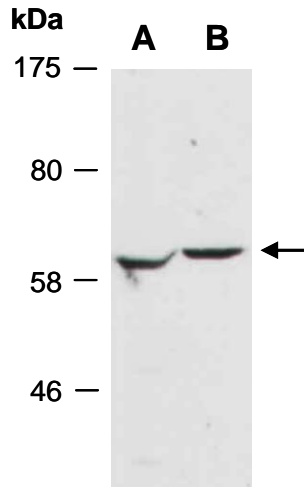


Fig 1. Western blot of total cell extracts from A) human HeLa, B) human Jurkat; using anti-CDC23 (N) (R0898-1) at RT for 2 h.