



Order: (888)-282-5810 (Phone)
(818)-707-0392 (Fax)
order@abiocode.com
Web: www.Abiocode.com

XRCC1 (C) Antibody, Rabbit Polyclonal

Cat#: R1624-2

Quantity: 100 ul

Predicted | Observed M.W.: 69 | 75-80 kDa

Lot#: Refer to vial

Application: WB

Uniprot ID: P18887

Background:

X-ray repair cross-complementing protein 1 (XRCC1) is involved in the efficient repair of DNA single-strand breaks formed by exposure to ionizing radiation and alkylating agents. XRCC1 interacts with DNA ligase III, polymerase beta and poly (ADP-ribose) polymerase to participate in the base excision repair pathway. It may play a role in DNA processing during meiosis and recombination in germ cells. A rare microsatellite polymorphism in this gene is associated with cancer in patients of varying radiosensitivity [provided by RefSeq].

Other Names:

DNA repair protein XRCC1, X-ray repair cross-complementing protein 1

Source and Purity:

Rabbit polyclonal antibodies were produced by immunizing animals with a GST-fusion protein containing the C-terminal region of human XRCC1. Antibodies were purified by affinity purification using immunogen.

Storage Buffer and Condition:

Supplied in 1 x PBS (pH 7.4), 100 ug/ml BSA, 40% Glycerol, 0.01% NaN₃. Store at -20 °C. Stable for 6 months from date of receipt.

Species Specificity:

Human, Mouse

Tested Applications:

WB: 1:1,000-1:3,000 (detect endogenous protein*)

*: The apparent protein size on WB may be different from the calculated M.W. due to modifications.

Product Data:

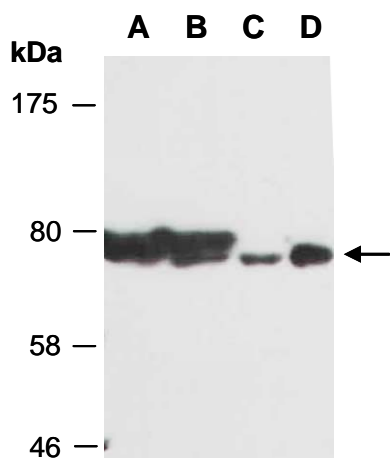


Fig 1. Western blot of total cell extracts from A) mouse brain, B) mouse thymus, C) human HeLa, D) human Jurkat; using anti-XRCC1 (C) (R1624-2) at RT for 2 h.