



Order: (888)-282-5810 (Phone)
(818)-707-0392 (Fax)
order@abiocode.com
Web: www.Abiocode.com

CSNK2A2 (C) Antibody, Rabbit Polyclonal

Cat#: R1726-2

Quantity: 100 ul

Predicted | Observed M.W.: 41 kDa

Lot#: Refer to vial

Application: WB

Uniprot ID: P19784

Background:

Casein kinase II subunit alpha' (CSNK2A2) is the catalytic subunit of a constitutively active serine/threonine-protein kinase complex that phosphorylates a large number of substrates containing acidic residues C-terminal to the phosphorylated serine or threonine. CSNK2A2 regulates numerous cellular processes, such as cell cycle progression, apoptosis and transcription, as well as viral infection. CSNK2A2 may act as a regulatory node which integrates and coordinates numerous signals leading to an appropriate cellular response.

Other Names:

Casein kinase II subunit alpha', CK II alpha', CK2A2

Source and Purity:

Rabbit polyclonal antibodies were produced by immunizing animals with a GST-fusion protein containing the C-terminal region of human CSNK2A2. Antibodies were purified by affinity purification using immunogen.

Storage Buffer and Condition:

Supplied in 1 x PBS (pH 7.4), 100 ug/ml BSA, 40% Glycerol, 0.01% NaN₃. Store at -20 °C. Stable for 6 months from date of receipt.

Species Specificity:

Human, Mouse

Tested Applications:

WB: 1:1,000-1:3,000 (detect endogenous protein*)

*: The apparent protein size on WB may be different from the calculated M.W. due to modifications.

Product Data:

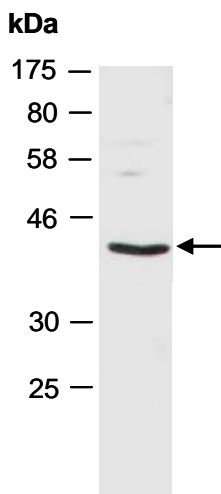


Fig 1. Western blot of total cell extracts from mouse brain; using anti-CSNK2A2 (C) (R1726-2) at RT for 2 h.