



Order: (888)-282-5810 (Phone)
(818)-707-0392 (Fax)
order@abiocode.com
Web: www.Abiocode.com

PLD6 (C) Antibody, Rabbit Polyclonal

Cat#: R1936-2

Quantity: 100 ul

Predicted | Observed M.W.: 28 | 25 kDa

Lot#: Refer to vial

Application: WB

Uniprot ID: Q8N2A8

Background:

Phospholipase D6 (PLD6) is a single-pass membrane protein located in mitochondrion outer membrane. PLD6 regulates mitochondrial shape through facilitating mitochondrial fusion. During spermatogenesis, PLD6 plays a critical role in PIWI-interacting RNA (piRNA) biogenesis. piRNAs provide essential protection against the activity of mobile genetic elements. piRNA-mediated transposon silencing is thus critical for maintaining genome stability, in particular in germline cells when transposons are mobilized as a consequence of wide-spread genomic demethylation. PLD6 has also been shown to be a backbone-non-specific, single strand-specific nuclease, cleaving either RNA or DNA substrates with similar affinity. PLD6 is widely expressed.

Other Names:

Mitochondrial cardiolipin hydrolase, Choline phosphatase 6, Mitochondrial phospholipase, MitoPLD, Phosphatidylcholine-hydrolyzing phospholipase D6, Phospholipase D6, PLD 6, Protein zucchini homolog, Phospholipase D family, member 6

Source and Purity:

Rabbit polyclonal antibodies were produced by immunizing animals with a GST-fusion protein containing the C-terminal region of human PLD6. Antibodies were purified by affinity purification using immunogen.

Storage Buffer and Condition:

Supplied in 1 x PBS (pH 7.4), 100 ug/ml BSA, 40% Glycerol, 0.01% NaN₃. Store at -20 °C. Stable for 6 months from date of receipt.

Species Specificity:

Human, Mouse

Tested Applications:

WB: 1:1,000-1:3,000 (detect endogenous protein*)

*: The apparent protein size on WB may be different from the calculated M.W. due to modifications.

Product Data:

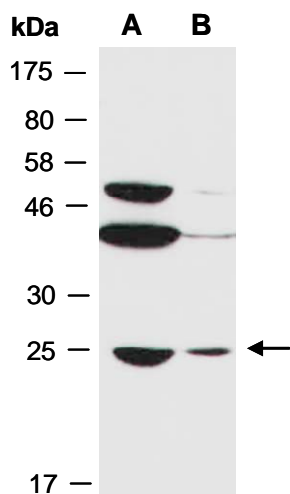


Fig 1. Western blot of total cell extracts from A) mouse thymus, B) human HeLa; using anti-PLD6 (C) (R1936-2) at RT for 2 h.