



Order: (888)-282-5810 (Phone)  
(818)-707-0392 (Fax)  
[order@abiocode.com](mailto:order@abiocode.com)  
Web: [www.Abiocode.com](http://www.Abiocode.com)

---

## SIL1 (N) Antibody, Rabbit Polyclonal

**Cat#: R2843-1**

**Quantity: 100 ul**

**Predicted | Observed MW: 52 kDa**

**Lot#: Refer to vial**

**Application: WB**

**Uniprot ID: Q9H173**

### **Background:**

Nucleotide exchange factor SIL1 is a resident endoplasmic reticulum (ER), N-linked glycoprotein with an N-terminal ER targeting sequence, 2 putative N-glycosylation sites, and a C-terminal ER retention signal. SIL1 functions as a nucleotide exchange factor for another unfolded protein response protein. Mutations in the SIL1 gene have been associated with Marinesco-Sjogren syndrome [provided by RefSeq].

### **Other Names:**

Nucleotide exchange factor SIL1, BiP-associated protein, BAP, BAP, MSS, ULG5

### **Source and Purity:**

Rabbit polyclonal antibodies were produced by immunizing animals with a GST-fusion protein containing the N-terminal region of human SIL1. Antibodies were purified by affinity purification using immunogen.

### **Storage Buffer and Condition:**

Supplied in 1 x PBS (pH 7.4), 100 ug/ml BSA, 40% Glycerol, 0.01% NaN<sub>3</sub>. Store at -20 °C. Stable for 6 months from date of receipt.

### **Species Specificity:**

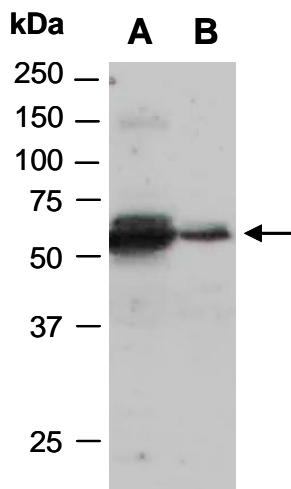
Human, Mouse

### **Tested Applications:**

WB: 1:1,000-1:3,000 (detect endogenous protein\*)

\*: The apparent protein size on WB may be different from the calculated M.W. due to modifications.

**Product Data:**



**Fig 1.** Western blot of total cell extracts from A) mouse brain, B) mouse thymus; using anti-SIL1 (N) (R2843-1) at RT for 2 h.