



Order: (888)-282-5810 (Phone)  
(818)-707-0392 (Fax)  
[order@abiocode.com](mailto:order@abiocode.com)  
Web: [www.Abiocode.com](http://www.Abiocode.com)

---

## **ELF1 (N) Antibody, Rabbit Polyclonal**

**Cat#: R2856-1**

**Quantity: 100 ul**

**Predicted | Observed M.W.: 67 | 85 kDa**

**Lot#: Refer to vial**

**Application: WB**

**Uniprot ID: P32519**

### **Background:**

E74-like factor 1 (ELF1) is a nuclear protein that belongs to the ETS family. ELF1 is a transcription factor that activates the LYN and BLK promoters. ELF1 appears to be required for the T-cell-receptor-mediated trans activation of HIV-2 gene expression. ELF1 binds specifically to two purine-rich motifs in the HIV-2 enhancer.

### **Other Names:**

ETS-related transcription factor Elf-1, E74-like factor 1

### **Source and Purity:**

Rabbit polyclonal antibodies were produced by immunizing animals with a GST-fusion protein containing the N-terminal region of human ELF1. Antibodies were purified by affinity purification using immunogen.

### **Storage Buffer and Condition:**

Supplied in 1 x PBS (pH 7.4), 100 ug/ml BSA, 40% Glycerol, 0.01% NaN<sub>3</sub>. Store at -20 °C. Stable for 6 months from date of receipt.

### **Species Specificity:**

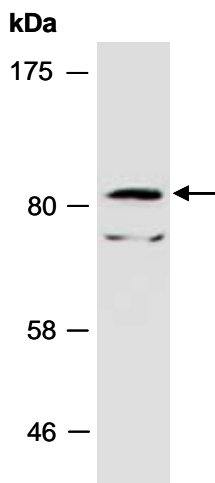
Human

### **Tested Applications:**

WB: 1:1,000-1:3,000 (detect endogenous protein\*)

\*: The apparent protein size on WB may be different from the calculated M.W. due to modifications.

**Product Data:**



**Fig 1.** Western blot of total cell extracts from human Jurkat; using anti-ELF1 (N) (R2856-1) at RT for 2 h.