



Order: (888)-282-5810 (Phone)
(818)-707-0392 (Fax)
order@abiocode.com
Web: www.Abiocode.com

PLAG1 (C) Antibody, Rabbit Polyclonal

Cat#: R2915-2

Quantity: 100 ul

Predicted | Observed M.W.: 56 | 52, 56 kDa

Lot#: Refer to vial

Application: WB

Uniprot ID: Q6DJT9

Background:

Pleomorphic adenoma gene 1 (PLAG1) is a zinc finger protein with 2 putative nuclear localization signals. PLAG1 is a transcription factor whose activation results in up-regulation of target genes, such as IGFII, leading to uncontrolled cell proliferation. Other target genes such as CRLF1, CRABP2, CRIP2, PIGF are strongly induced in cells with PLAG1 induction. PLAG1 is a proto-oncogene whose ectopic expression can trigger the development of pleomorphic adenomas of the salivary gland and lipoblastomas. Overexpression of PLAG1 is associated with up-regulation of IGFII, is frequently observed in hepatoblastoma, common primary liver tumor in childhood.

Other Names:

Zinc finger protein PLAG1, Pleiomorphic adenoma gene 1 protein

Source and Purity:

Rabbit polyclonal antibodies were produced by immunizing animals with a GST-fusion protein containing the C-terminal region of human PLAG1. Antibodies were purified by affinity purification using immunogen.

Storage Buffer and Condition:

Supplied in 1 x PBS (pH 7.4), 100 ug/ml BSA, 40% Glycerol, 0.01% NaN₃. Store at -20 °C. Stable for 6 months from date of receipt.

Species Specificity:

Human, Mouse

Tested Applications:

WB: 1:1,000-1:3,000 (detect endogenous protein*)

*: The apparent protein size on WB may be different from the calculated M.W. due to modifications.

Product Data:

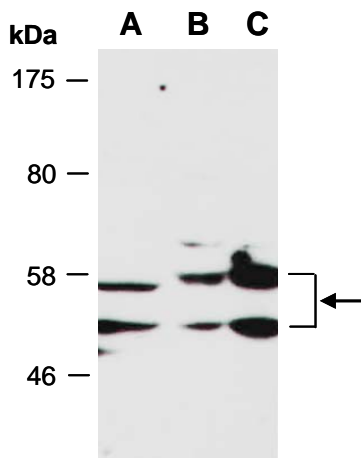


Fig 1. Western blot of total cell extracts from A) mouse brain, B) mouse thymus, C) human HeLa; using anti-PLAG1 (C) (R2915-2) at RT for 2 h.