



Order: (888)-282-5810 (Phone)  
(818)-707-0392 (Fax)  
[order@abiocode.com](mailto:order@abiocode.com)  
Web: [www.Abiocode.com](http://www.Abiocode.com)

---

## **AMH (N) Antibody, Rabbit Polyclonal**

**Cat#: R2421-1**

**Quantity: 100 ul**

**Predicted | Observed MW: 59 kDa**

**Lot#: Refer to vial**

**Application: WB**

**Uniprot ID: P03971**

### **Background:**

Anti-Mullerian hormone (AMH) is a member of the transforming growth factor-beta family, which mediates male sexual differentiation. Anti-Mullerian hormone causes the regression of Mullerian ducts which would otherwise differentiate into the uterus and fallopian tubes. Some mutations in the anti-Mullerian hormone result in persistent Mullerian duct syndrome [provided by RefSeq].

### **Other Names:**

Muellerian-inhibiting factor, Anti-Muellerian hormone, AMH, Muellerian-inhibiting substance, MIS, MIF

### **Source and Purity:**

Rabbit polyclonal antibodies were produced by immunizing animals with a GST-fusion protein containing the N-terminal region of human AMH. Antibodies were purified by affinity purification using immunogen.

### **Storage Buffer and Condition:**

Supplied in 1 x PBS (pH 7.4), 100 ug/ml BSA, 40% Glycerol, 0.01% NaN<sub>3</sub>. Store at -20 °C. Stable for 6 months from date of receipt.

### **Species Specificity:**

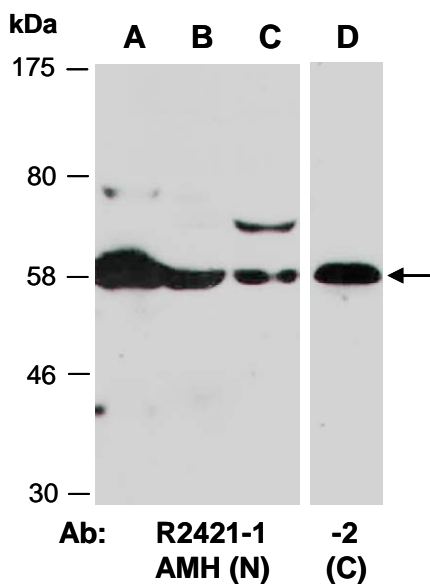
Human, Mouse

### **Tested Applications:**

WB: 1:1,000-1:3,000 (detect endogenous protein\*)

\*: The apparent protein size on WB may be different from the calculated M.W. due to modifications.

**Product Data:**



**Fig 1.** Western blot of total cell extracts from A) mouse brain, B) mouse thymus, C, D) human HeLa; using 2 independent Abs against 2 distinct regions of human AMH at RT for 2 h.