



Order: (888)-282-5810 (Phone)  
(818)-707-0392 (Fax)  
[order@abiocode.com](mailto:order@abiocode.com)  
Web: [www.Abiocode.com](http://www.Abiocode.com)

---

## TFE3 (C) Antibody, Rabbit Polyclonal

**Cat#: R2943-2**

**Quantity: 100 ul**

**Predicted | Observed M.W.: 62 | 80 kDa**

**Lot#: Refer to vial**

**Application: WB**

**Uniprot ID: P19532**

### **Background:**

TFE3 is a basic helix-loop-helix domain-containing transcription factor that binds MUE3-type E-box sequences in the promoter of genes. TFE3 promotes the expression of genes downstream of transforming growth factor beta (TGF-beta) signaling. TFE3 may be involved in chromosomal translocations in renal cell carcinomas and other cancers, resulting in the production of fusion proteins. Translocation partners include PRCC (papillary renal cell carcinoma), NONO (non-POU domain containing, octamer-binding), and ASPSCR1 (alveolar soft part sarcoma chromosome region, candidate 1), among other genes [provided by RefSeq].

### **Other Names:**

Transcription factor E3, Class E basic helix-loop-helix protein 33, bHLHe33, BHLHE33, Transcription factor binding to IGHM enhancer 3, TFEA

### **Source and Purity:**

Rabbit polyclonal antibodies were produced by immunizing animals with a GST-fusion protein containing the C-terminal region of human TFE3. Antibodies were purified by affinity purification using immunogen.

### **Storage Buffer and Condition:**

Supplied in 1 x PBS (pH 7.4), 100 ug/ml BSA, 40% Glycerol, 0.01% NaN<sub>3</sub>. Store at -20 °C. Stable for 6 months from date of receipt.

### **Species Specificity:**

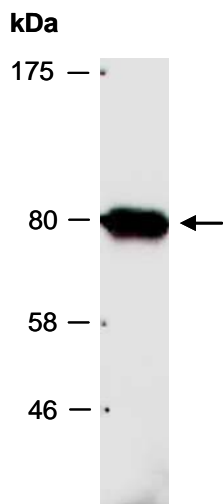
Human, Mouse

### **Tested Applications:**

WB: 1:1,000-1:3,000 (detect endogenous protein\*)

\*: The apparent protein size on WB may be different from the calculated M.W. due to modifications.

**Product Data:**



**Fig 1.** Western blot of total cell extracts from mouse brain; using anti-TFE3 (C) (R2943-2) at RT for 2 h.