



Order: (888)-282-5810 (Phone)
(818)-707-0392 (Fax)
order@abiocode.com
Web: www.Abiocode.com

DLX1 (M) Antibody, Rabbit Polyclonal

Cat#: R3361-1

Quantity: 100 ul

Predicted | Observed M.W.: 27 | 40 kDa

Lot#: Refer to vial

Application: WB

Uniprot ID: P56177

Background:

Distal-less homeobox 1 (DLX1) is a member of a homeobox transcription factor gene family similar to the Drosophila distal-less gene. DLX1 is localized to the nucleus where it may function as a transcriptional regulator of signals from multiple TGF-beta superfamily members. DLX1 may play a role in the control of craniofacial patterning and the differentiation and survival of inhibitory neurons in the forebrain. Alternatively spliced transcript variants encoding different isoforms of DLX1 have been described [provided by RefSeq].

Other Names:

Homeobox protein DLX-1, Distal-less homeobox 1

Source and Purity:

Rabbit polyclonal antibodies were produced by immunizing animals with a GST-fusion protein containing the middle region of human DLX1. Antibodies were purified by affinity purification using immunogen.

Storage Buffer and Condition:

Supplied in 1 x PBS (pH 7.4), 100 ug/ml BSA, 40% Glycerol, 0.01% NaN₃. Store at -20 °C. Stable for 6 months from date of receipt.

Species Specificity:

Human, Mouse

Tested Applications:

WB: 1:1,000-1:3,000 (detect endogenous protein*)

*: The apparent protein size on WB may be different from the calculated M.W. due to modifications.

Product Data:

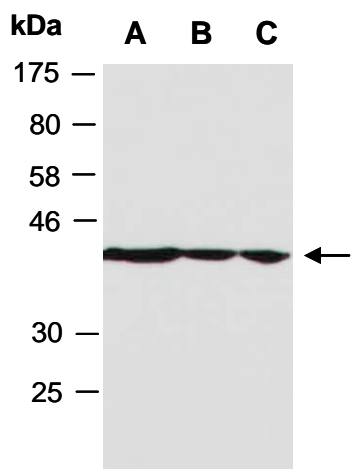


Fig 1. Western blot of total cell extracts from A) mouse thymus, B) human HeLa, C) human Jurkat; using anti-DLX1 (M) (R3361-1) at RT for 2 h.