



Order: (888)-282-5810 (Phone)
(818)-707-0392 (Fax)
order@abiocode.com
Web: www.Abiocode.com

CADM3 (M) Antibody, Rabbit Polyclonal

Cat#: R0947-2

Quantity: 100 ul

Predicted | Observed M.W.: 43 | 46 kDa

Lot#: Refer to vial

Application: WB

Uniprot ID: Q8N126

Background:

Cell adhesion molecule 3 (CADM3) is a single-pass type I membrane protein belonging to the nectin family. CADM3 is involved in the cell-cell adhesion and has both calcium-independent homophilic cell-cell adhesion activity and calcium-independent heterophilic cell-cell adhesion activity with IGSF4, PVRL1 and PVRL3. CADM3 interaction with EPB41L1 may regulate structure or function of cell-cell junctions

Other Names:

Cell adhesion molecule 3, Brain immunoglobulin receptor, Immunoglobulin superfamily member 4B, IgSF4B, Nectin-like protein 1, NECL-1, Synaptic cell adhesion molecule 3, SynCAM3, TSLC1-like protein 1, TSLL1, IGSF4B, NECL1, SYNCAM3, TSLL1

Source and Purity:

Rabbit polyclonal antibodies were produced by immunizing animals with a GST-fusion protein containing the middle region of human CADM3. Antibodies were purified by affinity purification using immunogen.

Storage Buffer and Condition:

Supplied in 1 x PBS (pH 7.4), 100 ug/ml BSA, 40% Glycerol, 0.01% NaN₃. Store at -20 °C. Stable for 6 months from date of receipt.

Species Specificity:

Human, Mouse

Tested Applications:

WB: 1:1,000-1:3,000 (detect endogenous protein*)

*: The apparent protein size on WB may be different from the calculated M.W. due to modifications.

Product Data:

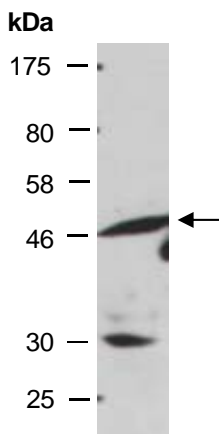


Fig 1. Western blot of total cell extracts from mouse brain, using anti-CADM3 (M) (R0947-2) at RT for 2 h.