



Order: (888)-282-5810 (Phone)  
(818)-707-0392 (Fax)  
[order@abiocode.com](mailto:order@abiocode.com)  
Web: [www.Abiocode.com](http://www.Abiocode.com)

---

## MAP2K2 (C1) Antibody, Rabbit Polyclonal

**Cat#: R1289-1**

**Quantity: 100 ul**

**Predicted | Observed M.W.: 44 | 46 kDa**

**Lot#: Refer to vial**

**Application: WB**

**Uniprot ID: P36507**

### **Background:**

Dual specificity mitogen-activated protein kinase kinase 2 (MAP2K2) belongs to the STE Ser/Thr protein kinase family and the MAP kinase subfamily. It may play a role in catalyzing the concomitant phosphorylation of a threonine and a tyrosine residue in a Thr-Glu-Tyr sequence located in MAP kinases. It may also activate the ERK1 and ERK2 MAP kinases. Mutations in MAP2K2 is related to cardiofaciocutaneous syndrome 4 (CFC4), a multiple congenital anomaly disorder characterized by a distinctive facial appearance, heart defects, and mental retardation.

### **Other Names:**

Dual specificity mitogen-activated protein kinase kinase 2, MAP kinase kinase 2, MAPKK 2, ERK activator kinase 2, MAPK/ERK kinase 2, MEK 2, MEK2, MKK2, PRKMK2

### **Source and Purity:**

Rabbit polyclonal antibodies were produced by immunizing animals with a GST-fusion protein containing C-terminal region of human MAP2K2. Antibodies were purified by affinity purification using immunogen.

### **Storage Buffer and Condition:**

Supplied in 1 x PBS (pH 7.4), 100 ug/ml BSA, 40% Glycerol, 0.01% NaN<sub>3</sub>. Store at -20 °C. Stable for 6 months from date of receipt.

### **Species Specificity:**

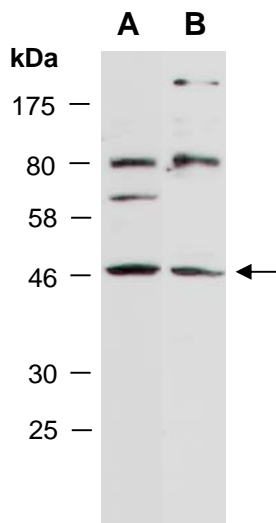
Human

### **Tested Applications:**

WB: 1:1,000-1:3,000 (detect endogenous protein\*)

\*: The apparent protein size on WB may be different from the calculated M.W. due to modifications.

**Product Data:**



**Fig 1.** Western blot of total cell extracts from A) human HeLa; B) human Jurkat; using anti-MAP2K2 (C1) (R1289-1) at RT for 2 h.