



Order: (888)-282-5810 (Phone)
(818)-707-0392 (Fax)
order@abiocode.com
Web: www.Abiocode.com

LHX5 (N) Antibody, Rabbit Polyclonal

Cat#: R1462-1

Quantity: 100 ul

Predicted | Observed M.W.: 44 kDa

Lot#: Refer to vial

Application: WB

Uniprot ID: Q9H2C1

Background:

LIM/homeobox protein Lhx5 plays an essential role in the regulation of neuronal differentiation and migration during development of the central nervous system. It is expressed in fetal brain and in various regions of the adult central nervous system including the spinal cord, the thalamus, and the cerebellum.

Other Names:

LIM/homeobox protein Lhx5, LIM homeobox protein 5

Source and Purity:

Rabbit polyclonal antibodies were produced by immunizing animals with a GST-fusion protein containing N-terminal region of human LHX5. Antibodies were purified by affinity purification using immunogen.

Storage Buffer and Condition:

Supplied in 1 x PBS (pH 7.4), 100 ug/ml BSA, 40% Glycerol, 0.01% NaN₃. Store at -20 °C. Stable for 6 months from date of receipt.

Species Specificity:

Human

Tested Applications:

WB: 1:1,000-1:3,000 (detect endogenous protein*)

*: The apparent protein size on WB may be different from the calculated M.W. due to modifications.

Product Data:

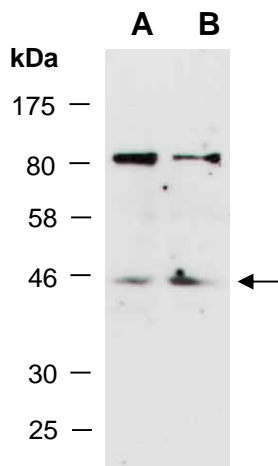


Fig 1. Western blot of total cell extracts from A) human HeLa; B) human Jurkat; using anti-LHX5 (N) (R1462-1) at RT for 2 h.