



Order: (888)-282-5810 (Phone)
(818)-707-0392 (Fax)
order@abiocode.com
Web: www.Abiocode.com

CRLF2 (M) Antibody, Rabbit Polyclonal

Cat#: R2387-2

Quantity: 100 ul

Predicted | Observed M.W.: 42 | 53 kDa

Lot#: Refer to vial

Application: WB

Uniprot ID: Q9HC73

Background:

Cytokine receptor-like factor 2 (CRLF2) is a single-pass type I membrane protein belonging to the type I cytokine receptor family and the Type 5 subfamily. CRLF2 is a receptor for thymic stromal lymphopoietin (TSLP). CRLF2 forms a functional complex with TSLP and IL7R which is capable of stimulating cell proliferation through activation of STAT3 and STAT5. Also, CRLF2 is implicated in the development of the hematopoietic system.

Other Names:

Cytokine receptor-like factor 2, Cytokine receptor-like 2, IL-XR, Thymic stromal lymphopoietin protein receptor, TSLP receptor, CRL2, ILXR, TSLPR

Source and Purity:

Rabbit polyclonal antibodies were produced by immunizing animals with a GST-fusion protein containing the middle region of human CRLF2. Antibodies were purified by affinity purification using immunogen.

Storage Buffer and Condition:

Supplied in 1 x PBS (pH 7.4), 100 ug/ml BSA, 40% Glycerol, 0.01% NaN₃. Store at -20 °C. Stable for 6 months from date of receipt.

Species Specificity:

Human, Mouse

Tested Applications:

WB: 1:1,000-1:3,000 (detect endogenous protein*)

*: The apparent protein size on WB may be different from the calculated M.W. due to modifications.

Product Data:

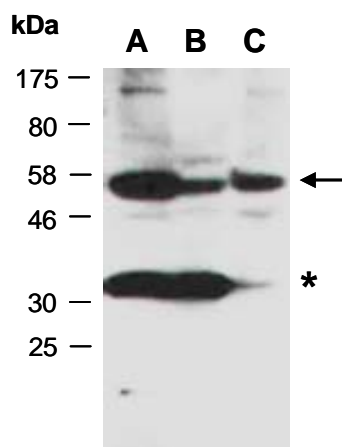


Fig 1. Western blot of total cell extracts from A) mouse thymus; B) human HeLa; C) human Jurkat; using anti-CRLF2 (M) (R2387-2) at RT for 2 h. The observed M.W. of CRLF2 is approximately 53 kD. * may represent a smaller isoform.