



Order: (888)-282-5810 (Phone)  
(818)-707-0392 (Fax)  
[order@abiocode.com](mailto:order@abiocode.com)  
Web: [www.Abiocode.com](http://www.Abiocode.com)

---

## **IL6ST (C) Antibody, Rabbit Polyclonal**

**Cat#: R2725-2**

**Quantity: 100 ul**

**Predicted | Observed M.W.: 104 kDa**

**Lot#: Refer to vial**

**Application: WB**

**Uniprot ID: P40189**

### **Background:**

Interleukin-6 receptor subunit beta (IL6ST) is a signal-transducing molecule that belongs to the type I cytokine receptor family. The receptor systems for IL6, LIF, OSM, CNTF, IL11, CTF1 and BSF3 can utilize gp130 for initiating signal transmission. IL6ST binds to IL6/IL6R (alpha chain) complex, resulting in the formation of high-affinity IL6 binding sites, and transduces the signal. It does not bind IL6. IL6ST may have a role in embryonic development. The type I OSM receptor is capable of transducing OSM-specific signaling events.

### **Other Names:**

Interleukin-6 receptor subunit beta, IL-6 receptor subunit beta, IL-6R subunit beta, IL-6R-beta, IL-6RB, CDw130, Interleukin-6 signal transducer, Membrane glycoprotein 130, gp130, Oncostatin-M receptor subunit alpha, CD130

### **Source and Purity:**

Rabbit polyclonal antibodies were produced by immunizing animals with a GST-fusion protein containing C-terminal region of human IL6ST. Antibodies were purified by affinity purification using immunogen.

### **Storage Buffer and Condition:**

Supplied in 1 x PBS (pH 7.4), 100 ug/ml BSA, 40% Glycerol, 0.01% NaN<sub>3</sub>. Store at -20 °C. Stable for 6 months from date of receipt.

### **Species Specificity:**

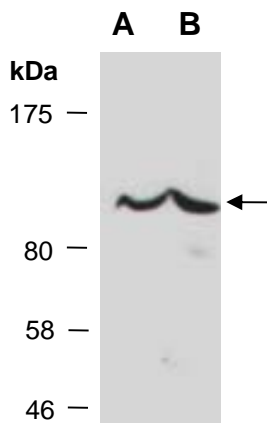
Human

### **Tested Applications:**

WB: 1:1,000-1:3,000 (detect endogenous protein\*)

\*: The apparent protein size on WB may be different from the calculated M.W. due to modifications.

**Product Data:**



**Fig 1.** Western blot of total cell extracts from A) human HeLa; B) human Jurkat; using anti-IL6ST (C) (R2725-2) at RT for 2 h.