



Order: (888)-282-5810 (Phone)
(818)-707-0392 (Fax)
order@abiocode.com
Web: www.Abiocode.com

PRKAR1A (N1) Antibody, Rabbit Polyclonal

Cat#: R2821-1

Quantity: 100 ul

Predicted | Observed M.W.: 43 kDa

Lot#: Refer to vial

Application: WB

Uniprot ID: P10644

Background:

CAMP-dependent protein kinase type I-alpha regulatory subunit (PRKAR1A) belongs to the cAMP-dependent kinase regulatory chain family. It is a regulatory subunit of the cAMP-dependent protein kinases involved in cAMP signaling in cells. Mutations in PRKAR1A are associated with Carney complex 1, intracardiac myxoma, primary pigmented nodular adrenocortical disease 1, and acrodysostosis.

Other Names:

cAMP-dependent protein kinase type I-alpha regulatory subunit, cAMP-dependent protein kinase type I-alpha regulatory subunit, TSE1, PKR1, PRKAR1

Source and Purity:

Rabbit polyclonal antibodies were produced by immunizing animals with a GST-fusion protein containing N-terminal region of human PRKAR1A. Antibodies were purified by affinity purification using immunogen.

Storage Buffer and Condition:

Supplied in 1 x PBS (pH 7.4), 100 ug/ml BSA, 40% Glycerol, 0.01% NaN₃. Store at -20 °C. Stable for 6 months from date of receipt.

Species Specificity:

Human, Mouse

Tested Applications:

WB: 1:1,000-1:3,000 (detect endogenous protein*)

*: The apparent protein size on WB may be different from the calculated M.W. due to modifications.

Product Data:

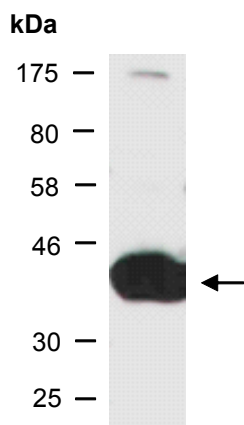


Fig 1. Western blot of total cell extracts from mouse brain, using anti-PRKAR1A (N1) (R2821-1) at RT for 2 h.