



Order: (888)-282-5810 (Phone)
(818)-707-0392 (Fax)
order@abiocode.com
Web: www.Abiocode.com

MESP2 (C) Antibody, Rabbit Polyclonal

Cat#: R3192-2

Quantity: 100 ul

Predicted | Observed M.W.: 42 | 58 kDa

Lot#: Refer to vial

Application: WB

Uniprot ID: Q0VG99

Background:

Mesoderm posterior protein 2 (MESP2) is a member of the bHLH family of transcription factors and plays a key role in defining the rostrocaudal patterning of somites via interactions with multiple Notch signaling pathways. MESP2 is expressed in the anterior presomitic mesoderm and is downregulated immediately after the formation of segmented somites. MESP2 also plays a role in the formation of epithelial somitic mesoderm and cardiac mesoderm. Mutations in the MESP2 gene cause autosomal recessive spondylocostal dystosis 2 (SCD02) [provided by RefSeq].

Other Names:

Mesoderm posterior protein 2, Class C basic helix-loop-helix protein 6, bHLHc6, BHLHC6, SCDO2

Source and Purity:

Rabbit polyclonal antibodies were produced by immunizing animals with a GST-fusion protein containing C-terminal region of human MESP2. Antibodies were purified by affinity purification using immunogen.

Storage Buffer and Condition:

Supplied in 1 x PBS (pH 7.4), 100 ug/ml BSA, 40% Glycerol, 0.01% NaN₃. Store at -20 °C. Stable for 6 months from date of receipt.

Species Specificity:

Human, Mouse

Tested Applications:

WB: 1:1,000-1:3,000 (detect endogenous protein*)

*: The apparent protein size on WB may be different from the calculated M.W. due to modifications.

Product Data:

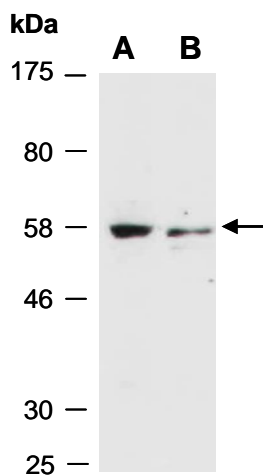


Fig 1. Western blot of total cell extracts from A) mouse thymus, B) human HeLa; using anti-MESP2 (C) (R3192-2) at RT for 2 h.