



Order: (888)-282-5810 (Phone)  
(818)-707-0392 (Fax)  
[order@abiocode.com](mailto:order@abiocode.com)  
Web: [www.Abiocode.com](http://www.Abiocode.com)

---

## TLR7 (C) Antibody, Rabbit Polyclonal

**Cat#: R1126-2**

**Quantity: 100 ul**

**Predicted | Observed MW: 121 | 140 kDa**

**Lot#: Refer to vial**

**Application: WB**

**Uniprot ID: Q9NYK1**

### **Background:**

Toll-like receptor 7 (TLR7) is a single-pass type I membrane protein belonging to the Toll-like receptor family. TLR7 is a key component of innate and adaptive immunity. TLRs (Toll-like receptors) control host immune response against pathogens through recognition of molecular patterns specific to microorganisms. TLR7 is a nucleotide-sensing TLR, which is activated by single-stranded RNA. TLR7 acts via MYD88 and TRAF6, leading to NF-kappa-B activation, cytokine secretion and the inflammatory response.

### **Other Names:**

Toll-like receptor 7

### **Source and Purity:**

Rabbit polyclonal antibodies were produced by immunizing animals with a GST-fusion protein containing C-terminal region of human TLR7. Antibodies were purified by affinity purification using immunogen.

### **Storage Buffer and Condition:**

Supplied in 1 x PBS (pH 7.4), 100 ug/ml BSA, 40% Glycerol, 0.01% NaN<sub>3</sub>. Store at -20 °C. Stable for 6 months from date of receipt.

### **Species Specificity:**

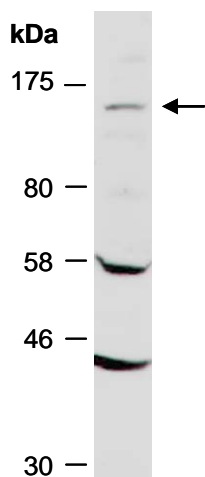
Human, Mouse

### **Tested Applications:**

WB: 1:1,000-1:3,000 (detect endogenous protein\*)

\*: The apparent protein size on WB may be different from the calculated M.W. due to modifications.

**Product Data:**



**Fig 1.** Western blot of total cell extracts from mouse thymus; using anti-TLR7 (C) (R1126-2) at RT for 2 h.